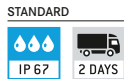
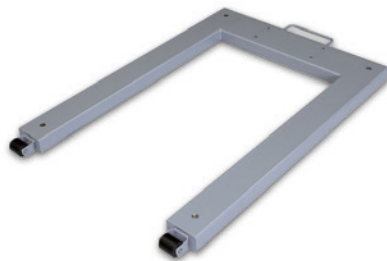



**4 KERN KFA-V20**

### Weighing beams



- **4 Weighing beams and painted steel base**
- **4 load cells, alloy steel, silicone-coated, IP67**
- **Levelling feet** for precise levelling of the weighing beams
- **D Image below: Version up to 6 t available.** Each weighing beam has a roller and handle for easy transport of the scale (KERN KFA-L)
- **NEW:** new model with short weighing beams, ideal for weighing compact items or animals in transport boxes
  - KERN KFA-600V20S
- Accessories page 118 (KERN UFA)


**5 KERN KFU-V20/V30**

### U-Weighing bridge



- **5 Load range:** painted steel (V20), stainless steel (V30) height 90 mm
- **4 load cells, alloy steel, silicone-coated, IP67, OIML-R60-approval for verification, class III, 3000 e**
- **2 rollers and handle** for easy transport of the scale
- Accessories KFU-V20 page 120 (KERN UFB)
- Accessories KFU-V30 page 122 (KERN UFN)


**6 KERN KFP-V30**

### Platform



- **6 Stainless steel-weighing plate,**
- **Stainless steel substructure**
- **1 load cell, Stainless steel, silicone-coated, IP67, OIML-approved, class III, 3000 e**
- **Level indicator and levelling feet** for precise levelling of the scale



### Note

For additional models with 4 encapsulated stainless steel load cells (IP68) see the website, KERN UFN-BM



Model	Weighing range [Max] kg	Readout [d] g	Verification value [e] g	Min. load [Min] g	Cable length approx. m	Net weight approx. kg	Weighing plate W×D×H mm	
<b>KERN</b>								
<b>4 Weighing beams KFA-V20</b>								
KFA 600V20S	600	200	-	-	5	30	800×120×100	
KFA 1500V20	1500	500	-	-	5	36	1200×120×100	
KFA 3000V20	3000	1000	-	-	5	36	1200×120×100	
KFA 3000V20L	3000	1000	-	-	5	65	2000×120×100	
KFA 6000V20L	6000	2000	-	-	5	125	2100×160×85	
KFA 6000V20	6000	2000	-	-	5	85	1200×160×80	
<b>5 U-Weighing bridge KFU-V20</b>								
KFU 600V20M	600	200	200	4000	5	55	840×1300×90	
KFU 1500V20M	1500	500	500	10000	5	55	840×1300×90	
<b>5 Stainless steel U-Weighing bridge KFU-V30</b>								
KFU 600V30M	600	200	200	4000	2,5	55	840×1300×90	
KFU 1500V30M	1500	500	500	10000	2,5	55	840×1300×90	
<b>6 Stainless steel platform KFP-V30</b>								
KFP 15V30M	15	0,5	5	100	2,5	5,0	300×240×100	
KFP 30V30M	30	1	10	200	2,5	10	400×300×128	↓
KFP 30V30SM	30	10	10	200	2,5	5,0	300×240×100	
KFP 60V30LM	60	2	20	400	2,5	10	500×400×137	
KFP 60V30M	60	2	20	400	2,5	10	400×300×128	
KFP 60V30XLM	60	2	20	400	2,5	22	650×500×142	
KFP 150V30SM	150	5	50	1000	2,5	10	400×300×128	
KFP 150V30M	150	5	50	1000	2,5	10	500×400×137	
KFP 150V30LM	150	5	50	1000	2,5	22	650×500×135	
KFP 300V30M	300	10	100	2000	2,5	22	650×500×135	

↓ Price reduction

# KERN Pictograms



**Internal adjusting:** Quick setting up of the balance's accuracy with internal adjusting weight (motordriven)



**Adjusting program CAL:** For quick setting up of the balance's accuracy. External adjusting weight required



**Memory:** Balance memory capacity, e.g. for article data, weighing data, tare weights, PLU etc.



**Alibi memory:** Secure, electronic archiving of weighing results, complying with the 2014/31/EU standard.



**Data interface RS-232:** To connect the balance to a printer, PC or network



**RS-485 data interface:** To connect the balance to a printer, PC or other peripherals. Suitable for data transfer over large distances. Network in bus topology is possible



**USB data interface:** To connect the balance to a printer, PC or other peripherals



**Bluetooth\* data interface:** To transfer data from the balance to a printer, PC or other peripherals



**WLAN data interface:** To transfer data from the balance to a printer, PC or other peripherals



**Control outputs (optocoupler, digital I/O):** To connect relays, signal lamps, valves, etc.



**Interface for second balance:** For direct connection of a second balance



**Network interface:** For connecting the scale to an Ethernet network



**Wireless data transfer:** between the weighing unit and the evaluation unit using an integrated radio module



**KERN Communication Protocol (KCP):** It is a standardized interface command set for KERN balances and other instruments, which allows retrieving and controlling all relevant parameters and functions of the device. KERN devices featuring KCP are thus easily integrated with computers, industrial controllers and other digital systems



**GLP/ISO log:** The balance displays serial number, user ID, weight, date and time, regardless of a printer connection



**GLP/ISO log:** With weight, date and time. Only with KERN printers



**Piece counting:** Reference quantities selectable. Display can be switched from piece to weight



**Recipe level A:** The weights of the recipe ingredients can be added together and the total weight of the recipe can be printed out



**Recipe level B:** Internal memory for complete recipes with name and target value of the recipe ingredients. User guidance through display



**Recipe level C:** Internal memory for complete recipes with name and target value of the recipe ingredients. User guidance through display, multiplier function, adjustment of recipe when dosages are exceeded or barcode recognition



**Totalising level A:** The weights of similar items can be added together and the total can be printed out



**Percentage determination:** Determining the deviation in % from the target value (100 %)



**Weighing units:** Can be switched to e.g. nonmetric units at the touch of a key. See balance model. Please refer to KERN's website for more details



**Weighing with tolerance range:** (Check-weighing) Upper and lower limiting can be programmed individually, e.g. for sorting and dosing. The process is supported by an audible or visual signal, see the relevant model



**Hold function:** (Animal weighing program) When the weighing conditions are unstable, a stable weight is calculated as an average value



**Protection against dust and water splashes IPxx:** The type of protection is shown in the pictogram.



**Stainless steel:** The balance is protected against corrosion



**Suspended weighing:** Load support with hook on the underside of the balance



**Battery operation:** Ready for battery operation. The battery type is specified for each device



**Rechargeable battery pack:** Rechargeable set



**Universal mains adapter:** with universal input and optional input socket adapters for  
A) EU, GB  
B) EU, GB, CH, USA  
C) EU, GB, CH, USA, AUS



**Mains adapter:** 230V/50Hz in standard version for EU. On request GB, USA or AUS version available



**Power supply:** Integrated in balance. 230V/50Hz standard EU. More standards e.g. GB, USA or AUS on request



**Weighing principle: Strain gauges** Electrical resistor on an elastic deforming body



**Weighing principle: Tuning fork** A resonating body is electromagnetically excited, causing it to oscillate



**Weighing principle: Electromagnetic force compensation** Coil inside a permanent magnet. For the most accurate weighings



**Weighing principle: Single cell technology** Advanced version of the force compensation principle with the highest level of precision



**Verification possible:** The time required for verification is specified in the pictogram



**DAkKS calibration possible (DKD):** The time required for DAkKS calibration is shown in days in the pictogram



**Package shipment:** The time required for internal shipping preparations is shown in days in the pictogram



**Pallet shipment:** The time required for internal shipping preparations is shown in days in the pictogram

## KERN – Precision is our business

To ensure the high precision of your balance KERN offers you the the appropriate test weight in the international OIML error limit classes E1-M3 from 1 mg - 2500 kg. In combination with a DAkKS calibration certificate the best pre-requisite for proper balance calibration.

The KERN DAkKS calibration laboratory today is one of the most modern and best-equipped DAkKS calibration laboratories for balances, test weights and force-measurement in Europe.

Thanks to the high level of automation, we can carry out DAkKS calibration of balances, test weights and force-measuring devices 24 hours a day, 7 days a week.

### Range of services:

- DAkKS calibration of balances with a maximum load of up to 50 t
- DAkKS calibration of weights in the range of 1 mg – 2500 kg
- Volume determination and measuring of magnetic susceptibility (magnetic characteristics) for test weights
- Database supported management of checking equipment and reminder service
- Calibration of force-measuring devices
- DAkKS calibration certificates in the following languages DE, GB, FR, IT, ES, NL, PL
- Conformity evaluation and reverification of balances and test weights

## Your KERN specialist dealer:

\*The Bluetooth® word mark and logos are registered trademarks owned by Bluetooth SIG, Inc. and any use of such marks by KERN & SOHN GmbH is under license. Other trademarks and trade names are those of their respective owners.