

## Hydraulically Operated Spring-Pressure Brake

Safety brake for hoisting equipment.

For dry operation, for higher brake power also with inlet for cooling oil .

- ◆ To secure holding position in drives controlled by hydraulic motors.
- ◆ Encapsulated, almost maintenance-free execution.
- ◆ As a safety brake for port facilities such as cranes, ship loading equipment and winches with corrosion-resistant surfaces (HLOBS).
- ◆ Manual release of the brake's piston by means of screws possible.
- ◆ With steel- / sinter discs suited for dry as well as oil operation.
- ◆ Vertical mounting, only when ordered with application guidelines.

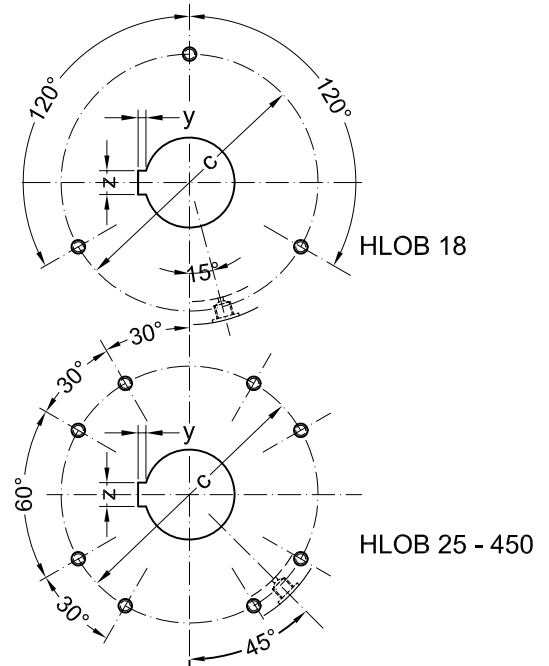
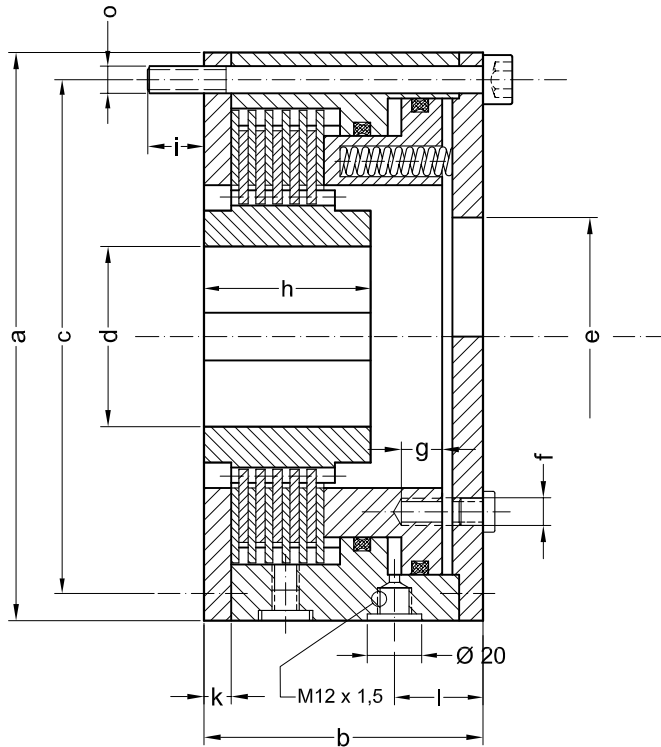
The brake is equipped with two in- / outlets, for oil pressure supply and for oil discharge (air relief) and a further outlet for oil leakage control, or oil drainage in case an additional supply for cooling oil has been connected.

In case of imposed security requirements, the listed torque values for oil operation also apply to an operation under dry conditions.

Executions:

"G"- enclosed model for enclosed gear installation.

"O"- open model, with boresize "e" for through-going shaft.



Data and Dimensions			HLOB 18	HLOB 25	HLOB 35	HLOB 64	HLOB 100	HLOB 160	HLOB 260	HLOB 450
Torque - dry operation	18 bar release pressure	Nm	180	250	350	640	1000	1600	2600	4500
Torque - oil operation	18 bar release pressure	Nm	120	170	210	400	650	1100	1700	3000
Torque - dry operation	30 bar release pressure	Nm	260	360	500	1000	1400	2300	3800	6500
Torque - oil operation	30 bar release pressure	Nm	180	250	350	640	1000	1600	2600	4500
Idling torque - oil operation		Nm	1,5	2	2,5	3	5	6	8	10
Friction work per engagement - dry operation <sup>1)</sup>		kJ	4	6	9	13	19	30	50	95
Thermal capacity - dry operation <sup>1)</sup>		W	90	100	125	160	200	260	375	500
Speed maximum - dry operation		min <sup>-1</sup>	3500	3400	3300	3200	3000	2700	2400	2000
Stroke volume - discs new / worn		cm <sup>3</sup>	3,5 / 8,5	5,4 / 12	8,5 / 20	13 / 31	18 / 44	26 / 57	42 / 85	68 / 136
Inertia moment - inner driver + discs		10 <sup>-3</sup> kgm <sup>2</sup>	0,4	0,8	1,8	4,3	9	20	50	115
Mass (weight)		kg	7	10	13	18	25	33	53	73
Ø a		mm	120	135	155	180	205	245	290	345
b		mm	87	95	100	107	112	122	147	160
Ø c		mm	100	115	135	160	185	220	265	315
Ø d max. H7		mm	30	40	45	55	65	90	110	140
Ø e		mm	45	52	65	82	95	120	140	180
f		mm	M6	M6	M6	M6	M8	M10	M12	M12
g		mm	15	15	15	15	20	20	25	25
h		mm	44	45	52	55	60	68	90	95
i ~		mm	12	15	15	15	20	20	25	25
k		mm	8	8	9	9	10	11	13	15
l ~		mm	33	35	37	39	41	43	54	60
o		mm	M8	M8	M8	M10	M10	M12	M14	M16
Keyway DIN 6885 - 2		mm	8 x 3,3	12 x 3,3	14 x 3,8	16 x 4,3	18 x 4,4	25 x 5,4	28 x 6,4	36 x 8,4

1) Higher values for oil operation according to the quantity of cooling oil.