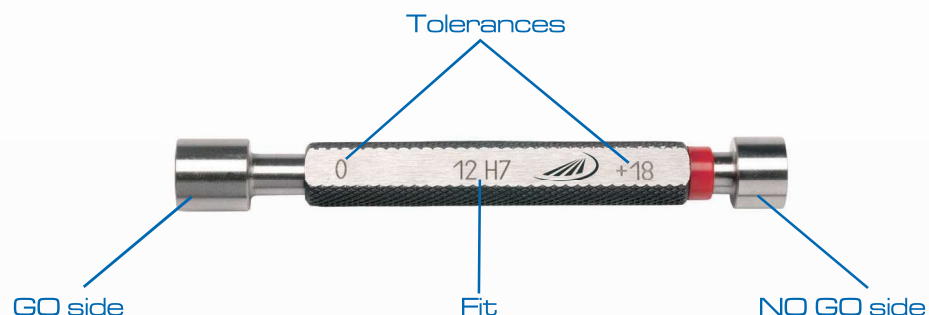




HELIOS · PREISSER

SAMPLES GAUGES

PLUG GAUGES



OUR SPECIAL OFFER:

PLUG GAUGES **WITH REQUIRED FIT**
OR **INDIVIDUAL TOLERANCES**
ACCORDING TO YOUR SPECIFICATIONS

BESTSELLER:

FEELER GAUGE **TAPES** IN
SINGLE BOXES



NOW AVAILABLE
FROM **STAINLESS STEEL**



AS **SET** IN OUR CONVENIENT
WALLHOLDER

Incl. holder for
feeler gauge tapes

6. CHAPTER GAUGES, RULES INSPECTION EQUIPMENT

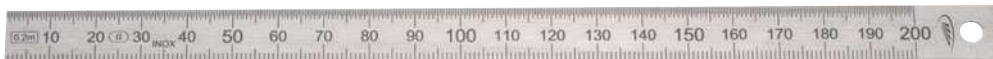
218	Graduated rules
221	Steel scale tapes for circumference and diameter
222	Rules
225	Knife edge rules
226	Inspection plates made from cast iron
228	Measuring and inspection plates made from granite
229	Lapping and inspection plate
229	Angle normal
230	Sinus rules, prisms
236	Sets of parallel blocks
237	Levels
239	Profile gauges, ISO indicators
242	Twist drill grinding and inspection gauges
243	Grinding / Welding gauges
244	Radius / Chamfer gauge
245	Tapered hole gauges
246	Hole gauges
247	Radius gauges
248	Feeler gauges
250	Feeler gauge tapes
252	Comparative surface roughness standards
253	Feeler gauge tapes and precision reference sheets
255	Gauge blocks and accessories
266	Pin gauges
268	Plug gauges, snap gauges
271	Plug gauges with special dimensions



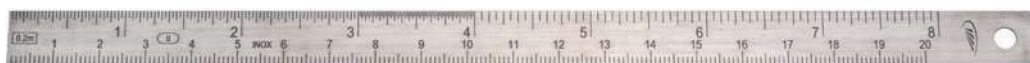
0460 Flexible steel rules



0460 204



0460 222



0460 242

Model

- Stainless spring band steel
- EC grade II
- Rules with special graduations or other scales are available upon request

	Length mm	Cross-section mm	Order no.	List price EUR
Scales: mm top and bottom				
	150	13 x 0.5	0460 201	1.10
	200	13 x 0.5	0460 202	1.10
	300	15 x 0.5	0460 204	1.60
	500	20 x 0.5	0460 205	4.30
	1000	20 x 0.5	0460 206	9.20
	300	30 x 1.0	0460 207	3.20
	500	30 x 1.0	0460 208	7.70
	1000	30 x 1.0	0460 209	16.00
	1500	30 x 1.0	0460 210	25.80
	2000	30 x 1.0	0460 211	31.10
	3000	30 x 1.0	0460 212	72.00
▪	3000	30 x 2.0	0460 213	111.00
Scales: 1/2 mm top, mm bottom				
	150	13 x 0.5	0460 221	1.10
	200	13 x 0.5	0460 222	1.10
	250	15 x 0.5	0460 223	1.60
	300	15 x 0.5	0460 224	1.60
	500	20 x 0.5	0460 225	4.30
	1000	20 x 0.5	0460 226	9.20
	300	30 x 1.0	0460 227	3.20
	500	30 x 1.0	0460 228	7.70
	1000	30 x 1.0	0460 229	16.00
	1500	30 x 1.0	0460 230	25.80
	2000	30 x 1.0	0460 231	31.10
	3000	30 x 1.0	0460 232	72.00
▪	3000	30 x 2.0	0460 233	111.00
Scales: 1/16", 1/32", 1/64" top; 1/2 mm, 1/1 mm bottom				
	150	13 x 0.5	0460 241	1.10
	200	13 x 0.5	0460 242	1.10
	250	15 x 0.5	0460 243	1.60
	300	15 x 0.5	0460 244	1.60
	500	20 x 0.5	0460 245	4.30
	1000	20 x 0.5	0460 246	9.20
	300	30 x 1.0	0460 247	3.20
	500	30 x 1.0	0460 248	7.70
	1000	30 x 1.0	0460 249	16.00
	1500	30 x 1.0	0460 250	25.80
	2000	30 x 1.0	0460 251	31.10
	3000	30 x 1.0	0460 252	72.00
▪	3000	30 x 2.0	0460 253	111.00



0460 Flexible steel rules, satin chrome



0460 502



0460 522

Model

- Stainless spring band steel
- Scales satin chrome finished
- EC grade II

		Length mm	Cross-section mm	Order no.	List price EUR
Scales: mm top and bottom					
		150	13 x 0.5	0460 501	2.70
		200	13 x 0.5	0460 502	4.30
		300	15 x 0.5	0460 504	4.90
		500	20 x 0.5	0460 505	10.70
		1000	20 x 0.5	0460 506	21.80
		300	30 x 1.0	0460 507	5.60
		500	30 x 1.0	0460 508	11.80
		1000	30 x 1.0	0460 509	24.60
	▪	1500	35 x 1.5	0460 510	72.00
	▪	2000	35 x 1.5	0460 511	113.00
	▪	3000	35 x 1.3	0460 512	237.00
Scales: 1/2 mm top, mm bottom					
		150	13 x 0.5	0460 521	2.70
		200	13 x 0.5	0460 522	4.30
		300	15 x 0.5	0460 524	4.90
		500	20 x 0.5	0460 525	10.70
		1000	20 x 0.5	0460 526	21.80
		300	30 x 1.0	0460 527	5.60
		500	30 x 1.0	0460 528	11.80
		1000	30 x 1.0	0460 529	24.60

0453 Aluminium straight edges, anodized



0453 422

Model

- Bevelled edge
- Non-glare mm graduation
- Factory standard

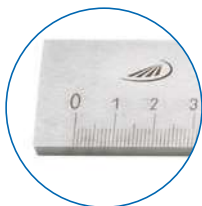
		Length mm	Cross-section mm	Order no.	List price EUR
		300	50 x 5	0453 422	8.90
		600	50 x 5	0453 430	13.20
		1000	50 x 5	0453 434	19.50



0451 Graduated straight rules acc. to DIN 866, type A



DIN
866-A



Model

- Both-sided 10 mm protective ends
- mm graduated scale

Delivery

- Cardboard box
- From 2000 mm in transportation box

		Length mm	Cross-section mm	Order no.	List price EUR
Special steel					
		500	30 x 6	0451 101	25.80
		1000	40 x 8	0451 102	59.00
	■	1500	40 x 8	0451 103	106.00
	■	2000	50 x 10	0451 104	147.00
	■	3000	50 x 10	0451 105	304.00
	■	4000	60 x 12	0451 106	552.00
Stainless steel					
		500	30 x 6	0451 201	45.70
		1000	40 x 8	0451 202	105.00
	■	1500	40 x 8	0451 203	156.00
	■	2000	50 x 10	0451 204	274.00
	■	3000	50 x 10	0451 205	552.00
	■	4000	60 x 12	0451 206	998.00

0452 Graduated straight rules acc. to DIN 866, type B



DIN
866-B



Model

- Graduated scale begins directly on the end of rule, the other end has a 10 mm protective end
- mm graduated scale

Delivery

- Cardboard box
- From 2000 mm in transportation box

		Length mm	Cross-section mm	Order no.	List price EUR
Special steel					
		500	25 x 5	0452 101	20.30
		1000	30 x 6	0452 103	40.10
	■	1500	30 x 6	0452 104	58.00
	■	2000	40 x 8	0452 105	95.00
	■	2500	40 x 8	0452 106	150.00
	■	3000	40 x 8	0452 107	166.00
	■	4000	50 x 10	0452 108	317.00
	■	5000	60 x 12	0452 109	570.00
Stainless steel					
		500	25 x 5	0452 201	27.10
		1000	30 x 6	0452 203	59.00
	■	1500	30 x 6	0452 204	101.00
	■	2000	40 x 8	0452 205	160.00
	■	2500	40 x 8	0452 206	306.00
	■	3000	40 x 8	0452 207	318.00
	■	4000	50 x 10	0452 208	572.00
	■	5000	60 x 12	0452 209	1090.00



0458 Steel scale tapes for circumference and diameter



0458 104



0458 102

Model

- Factory standard
- Vernier 0.1 mm
- Main scale graduation 1 mm

Delivery

- Cardboard box

		For circumference mm	For dia. mm	Order no.	List price EUR
Spring band steel					
		60 - 950	20 - 300	0458 102	38.30
		940 - 2200	300 - 700	0458 103	45.70
		2190 - 3460	700 - 1100	0458 104	59.00
		3450 - 4720	1100 - 1500	0458 105	71.00
		4710 - 5980	1500 - 1900	0458 106	85.00
		5960 - 7230	1900 - 2300	0458 107	98.00
		7220 - 8500	2300 - 2700	0458 108	242.00
		8480 - 9760	2700 - 3100	0458 109	259.00
		9730 - 11010	3100 - 3500	0458 110	333.00
		11000 - 12260	3500 - 3900	0458 111	511.00
		12250 - 13500	3900 - 4300	0458 112	521.00
		13500 - 14760	4300 - 4700	0458 113	531.00
Stainless spring band steel					
		60 - 950	20 - 300	0458 202	68.00
		940 - 2200	300 - 700	0458 203	86.00
		2190 - 3460	700 - 1100	0458 204	105.00
		3450 - 4720	1100 - 1500	0458 205	139.00
		4710 - 5980	1500 - 1900	0458 206	168.00

0458 Interior circumference tapes



Model

- To measure the internal circumference and the mean diameter of a round, oval or a continuous polygon bore
- Main scale graduation 1 mm
- Vernier 0.1 mm
- Laser graduation
- Stainless spring band steel
- The tape is attached through an expanding collet

Delivery

- Cardboard box

		For circumference mm	For dia. mm	Order no.	List price EUR
		720 - 1550	230 - 490	0458 252	307.00
		940 - 2200	300 - 700	0458 253	323.00
		2190 - 3620	700 - 1100	0458 254	344.00
		3450 - 4720	1100 - 1500	0458 255	396.00
		4710 - 5980	1500 - 1900	0458 256	432.00

Accessories

Expanding collet

Order no.

0458 291

List price EUR

431.00



0454 Straight edges, with bevelled edge




Model

- Special steel
- Zinc coated
- Factory standard

Delivery

- Cardboard box
- From 2000 mm in transportation box

	Length mm	Cross-section mm	Order no.	List price EUR
	400	40 x 5	0454 424	9.40
	500	40 x 5	0454 428	11.70
▪	1000	40 x 5	0454 434	23.20
▪	1500	40 x 5	0454 438	42.20
▪	2000	40 x 5	0454 440	64.00
▪	3000	50 x 8	0454 444	169.00

0455 Straight edges with bevelled edge, mm graduation




Model

- Special steel
- Zinc coated
- Factory standard
- Graduated scale begins directly on the end of rule, the other end has a 10 mm protective end

Delivery

- Cardboard box
- From 2000 mm in transportation box

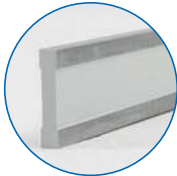
	Length mm	Cross-section mm	Order no.	List price EUR
	400	40 x 5	0455 424	17.30
	500	40 x 5	0455 428	21.60
▪	1000	40 x 5	0455 434	41.00
▪	1500	40 x 5	0455 438	73.00
▪	2000	40 x 5	0455 440	107.00
▪	3000	50 x 8	0455 444	226.00



0464 Steel rules made of special steel, accuracy grade 0



rectangular cross section



I shaped cross section, 2 hand slots

Model

- Special steel
- Measuring surfaces are finely grinded
- Flatness of measuring surfaces according to DIN 874

Delivery

- Cardboard box
- From 2000 mm in transportation box

		Length mm	Cross-section mm	Order no.	List price EUR
Special steel, rectangular cross section					
		500	50 x 10	0464 101	66.00
		750	50 x 10	0464 102	94.00
		1000	60 x 12	0464 103	147.00
▪		1500	70 x 15	0464 104	248.00
Special steel, I shaped cross section, 2 hand slots					
▪		2000	80 x 15	0464 105	445.00
▪		2500	100 x 16	0464 106	756.00
▪		3000	120 x 20	0464 107	1161.00
▪		4000	140 x 20	0464 108	1995.00

0465 Steel rules made of special steel, accuracy grade 1

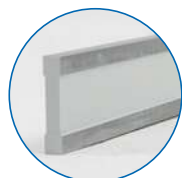
		Length mm	Cross-section mm	Order no.	List price EUR
Special steel, rectangular cross section					
		500	40 x 8	0465 101	32.30
		750	50 x 10	0465 102	53.00
		1000	50 x 10	0465 103	72.00
▪		1500	60 x 12	0465 104	132.00
Special steel, I shaped cross section, 2 hand slots					
▪		2000	70 x 15	0465 105	268.00
▪		2500	80 x 15	0465 106	502.00
▪		3000	100 x 16	0465 107	862.00
▪		4000	120 x 20	0465 108	1393.00

0466 Steel rules made of special steel, accuracy grade 2

		Length mm	Cross-section mm	Order no.	List price EUR
Special steel, rectangular cross section					
		500	30 x 6	0466 101	22.20
		750	40 x 8	0466 102	39.00
		1000	40 x 8	0466 103	44.40
▪		1500	50 x 10	0466 104	85.00
▪		2000	60 x 12	0466 105	116.00
▪		2500	70 x 15	0466 106	256.00
▪		3000	80 x 15	0466 107	400.00
Special steel, I shaped cross section, 2 hand slots					
▪		4000	100 x 16	0466 108	951.00
▪		5000	120 x 20	0466 109	1433.00



0464 Steel rules made of stainless steel, accuracy grade 0



rectangular cross section



I shaped cross section, 2 hand slots

Model

- Special steel
- Measuring surfaces are finely grinded
- Flatness of measuring surfaces according to DIN 874

Delivery

- Cardboard box
- From 2000 mm in transportation box

		Length mm	Cross-section mm	Order no.	List price EUR
Stainless steel, rectangular cross section					
		500	50 x 10	0464 201	104.00
		750	50 x 10	0464 202	142.00
		1000	60 x 12	0464 203	268.00
	▪	1500	70 x 15	0464 204	445.00
Stainless steel, I shaped cross section, 2 hand slots					
	▪	2000	80 x 15	0464 205	823.00
	▪	2500	100 x 16	0464 206	1433.00
	▪	3000	120 x 18	0464 207	2534.00
	▪	4000	140 x 20	0464 208	4520.00

0465 Steel rules made of stainless steel, accuracy grade 1



		Length mm	Cross-section mm	Order no.	List price EUR
Stainless steel, rectangular cross section					
		500	40 x 8	0465 201	59.00
		750	50 x 10	0465 202	91.00
		1000	50 x 10	0465 203	164.00
	▪	1500	60 x 12	0465 204	256.00
Stainless steel, I shaped cross section, 2 hand slots					
	▪	2000	70 x 15	0465 205	604.00
	▪	2500	80 x 15	0465 206	920.00
	▪	3000	100 x 16	0465 207	1772.00
	▪	4000	120 x 18	0465 208	2610.00

0466 Steel rules made of stainless steel, accuracy grade 2



		Length mm	Cross-section mm	Order no.	List price EUR
Stainless steel, rectangular cross section					
		500	30 x 6	0466 201	38.30
		750	40 x 8	0466 202	67.00
		1000	40 x 8	0466 203	98.00
	▪	1500	50 x 10	0466 204	204.00
	▪	2000	60 x 12	0466 205	344.00
	▪	2500	70 x 15	0466 206	572.00
	▪	3000	80 x 15	0466 207	817.00
Stainless steel, I shaped cross section, 2 hand slots					
	▪	4000	100 x 16	0466 208	1521.00
	▪	5000	120 x 18	0466 209	2280.00



0512 Knife edge rules



0512 101

DIN
874

Model

- DIN 874 Sheet 2, accuracy grade 00
- Thermally insulated
- Pointed tip at one end
- Special steel: glare free and burnished knife edge
- Stainless steel: non glare knife edge

Delivery

- Up to 500 mm in imitation leather case. From 500 mm individually packed

		Length mm	Cross-section mm	Order no.	List price EUR
Special steel, hardened and grinded					
		75	25 x 5	0512 101	10.50
		100	25 x 5	0512 102	11.80
		125	25 x 5	0512 103	13.30
		150	25 x 5	0512 104	15.10
		200	29 x 7	0512 105	19.70
		300	29 x 7	0512 106	37.10
		400	33 x 10	0512 107	66.00
		500	33 x 10	0512 108	104.00
Stainless steel, hardened and grinded					
		75	25 x 5	0512 201	13.70
		100	25 x 5	0512 202	16.00
		125	25 x 5	0512 203	16.70
		150	25 x 5	0512 204	18.70
		200	29 x 7	0512 205	21.60
		300	29 x 7	0512 206	46.90
		400	33 x 10	0512 207	85.00
		500	33 x 10	0512 208	116.00
		600	45 x 10	0512 209	224.00
		750	60 x 12	0512 210	454.00
		1000	60 x 12	0512 211	595.00

0512 Wooden cases for knife edge rules



		Length mm	Order no.	List price EUR
		75	0512 601	5.40
		100	0512 602	5.40
		125	0512 603	5.40
		150	0512 604	6.50
		200	0512 605	7.60
		300	0512 606	8.60
		400	0512 607	10.80
		500	0512 608	16.30
		600	0512 609	16.30
		750	0512 610	32.50
		1000	0512 611	37.90



0467 Mounting straight edges





DIN
874



Model

- DIN 874 Sheet 1
- Special steel
- Tolerance 21 µm

		Length mm	Cross-section mm	Order no.	List price EUR
Accuracy grade 0					
		1000	160 x 50	0467 011	647.00
	▪	1500	160 x 50	0467 012	925.00
	▪	2000	160 x 50	0467 013	1205.00
	▪	2500	160 x 50	0467 014	1552.00
	▪	3000	180 x 60	0467 015	2597.00
	▪	4000	180 x 60	0467 016	3609.00
	▪	5000	200 x 80	0467 017	6266.00
Accuracy grade 1					
		1000	100 x 30	0467 111	476.00
	▪	1500	100 x 30	0467 112	642.00
	▪	2000	120 x 40	0467 113	857.00
	▪	2500	120 x 40	0467 114	1172.00
	▪	3000	140 x 40	0467 115	1579.00
	▪	4000	140 x 40	0467 116	2078.00
	▪	5000	140 x 40	0467 117	3293.00

0478 Inspection plates





DIN
876-2

Model

- Special cast iron
- Rigid ripped construction
- milled



		Base dimensions mm	Accuracy grade	Order no.	List price EUR
Grinded					
		200 x 200	3	0478 312	101.00
		300 x 300	3	0478 315	162.00
	▪	400 x 300	3	0478 316	195.00
	▪	400 x 400	3	0478 317	233.00
	▪	500 x 400	3	0478 318	301.00
	▪	500 x 500	3	0478 319	446.00
	▪	600 x 500	3	0478 321	491.00
	▪	800 x 500	3	0478 324	701.00
	▪	1000 x 600	3	0478 327	1114.00

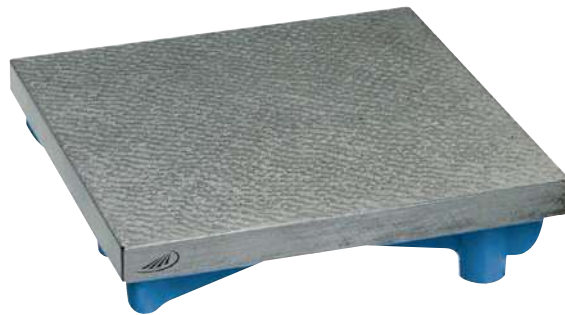
0478 Inspection plates



DIN
876-2

Model

- Flatness in accordance to DIN 876-2
- Special cast iron
- Rigid construction



		Base dimensions mm	Accuracy grade	Order no.	List price EUR
Scraped					
		200 x 200	0	0478 012	172.00
		300 x 300	0	0478 015	301.00
	▪	400 x 300	0	0478 016	379.00
	▪	400 x 400	0	0478 017	491.00
Microground					
	▪	200 x 200	1	0478 112	135.00
	▪	300 x 300	1	0478 115	223.00
	▪	400 x 300	1	0478 116	301.00
	▪	400 x 400	1	0478 117	379.00
	▪	500 x 400	1	0478 118	423.00
	▪	500 x 500	1	0478 119	546.00
	▪	600 x 500	1	0478 121	602.00
	▪	800 x 500	1	0478 124	1002.00
	▪	1000 x 600	1	0478 127	1782.00

0478 Base stand for inspection plates



6



		For plate size mm	Order no.	List price EUR
		400 x 400	0478 907	287.00
		500 x 400	0478 908	287.00
		500 x 500	0478 909	307.00
	▪	600 x 500	0478 911	323.00
	▪	800 x 500	0478 914	365.00
	▪	1000 x 600	0478 917	438.00



0481 Measuring and inspection plates



Model

- Flatness in accordance to DIN 876-1
- Granite
- Acid resistant
- Steel ball inserts

Delivery

- Without base stand (option)

DIN
876-1

✕	✕	Base dimensions mm	Order no.	List price EUR
Accuracy grade 00				
▪		400 x 400 x 50	0481 023	315.00
▪		500 x 400 x 90	0481 024	455.00
▪		600 x 500 x 100	0481 025	685.00
▪		800 x 600 x 120	0481 028	1137.00
▪		1000 x 600 x 140	0481 030	1298.00
▪		1200 x 800 x 160	0481 034	2142.00
Accuracy grade 0				
▪		400 x 400 x 50	0481 043	268.00
▪		500 x 400 x 90	0481 044	391.00
▪		600 x 500 x 100	0481 045	580.00
▪		800 x 600 x 120	0481 048	974.00
▪		1000 x 600 x 140	0481 050	1235.00
▪		1200 x 800 x 160	0481 054	1947.00
Accuracy grade 1				
▪		400 x 400 x 50	0481 103	229.00
▪		500 x 400 x 90	0481 104	332.00
▪		600 x 500 x 100	0481 105	506.00
▪		800 x 600 x 120	0481 108	844.00
▪		1000 x 600 x 140	0481 110	1123.00
▪		1200 x 800 x 160	0481 114	1787.00

0481 Base stand for surface and inspection plates



✕	✕	For plate size mm	Order no.	List price EUR
		400 x 400	0481 160	353.00
		500 x 400	0481 161	366.00
	▪	600 x 500	0481 162	386.00
	▪	800 x 600	0481 165	412.00
	▪	1000 x 600	0481 167	431.00
	▪	1200 x 800	0481 170	490.00

0481 Cabinet for measuring and inspection plates

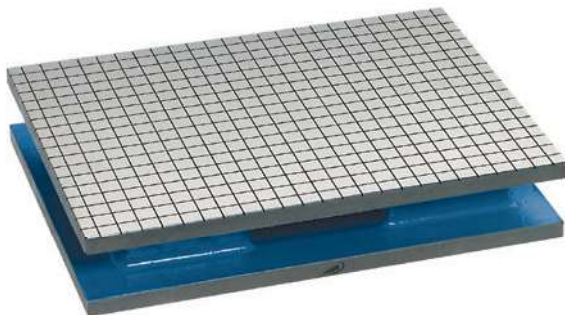


Model

- Frame is made of angled steel and is completely panelled with steel
- Adjustable 3 point bearing fitting
- 2 adjustable screws for stability
- Lockable doors
- Shelves are removable
- Feet are adjustable to compensate for unevenness of the floor
- 1 door, 1 shelf

☒	☒	For plate size mm	Description	Order no.	List price EUR
▪		600 x 500	1 door, 1 shelf	0481 184	1144.00
▪		800 x 600	1 door, 1 shelf	0481 186	1260.00
▪		1000 x 600	2 doors, 1 drawer, 1 shelf	0481 188	1308.00
▪		1200 x 800	2 doors, 1 drawer, 1 shelf	0481 190	1462.00

0482 Lapping and inspection plate



Model

- High grade cast iron
- Finely ground
- One side for lapping with rectangular grooves
- One side as inspection plate flat straight trough

Delivery

- Wooden case

☒	☒	Base dimensions mm	Order no.	List price EUR
▪		360 x 260 x 65	0482 101	488.00

0544 Angle normal 90°, triangular



Model

- Made of black granite
- From 600 x 400 mm with weight reducing holes

☒	☒	Length mm	Width mm	Height mm	Angle accuracy μ	Order no.	List price EUR
		150	40	200	2	0544 101	346.00
		200	50	300	2	0544 102	534.00
		250	60	400	3	0544 103	739.00
		300	60	500	3	0544 104	934.00
▪		400	70	600	4	0544 105	1588.00
▪		500	90	800	4	0544 106	2392.00
▪		600	100	1000	4	0544 107	4565.00



0513 Sinus rules



DIN
2273



0513 001



0513 011

Model

- DIN 2273
- Special steel, hardened

Delivery

- With sinus table
- Cardboard box

		Roller spacing mm	Barrel distance mm	Order no.	List price EUR
Without stop type B					
		100	0.002	0513 001	172.00
		200	0.004	0513 002	198.00
With stop type A					
		100	0.002	0513 011	188.00
		200	0.004	0513 012	219.00

0504 V-blocks (pair)



Model

- Special cast iron
- 90° grooves
- Machined in pairs

Delivery

- In pairs
- Cardboard box

		Base dimensions mm	For shaft dia. mm	Accuracy grade	Order no.	List price EUR
Parallelism tolerance < 0.008 mm, V-grooves and base finely grinded						
		100 x 40 x 30	6 - 40	0	0504 012	93.00
		150 x 50 x 40	8 - 50	0	0504 013	145.00
		200 x 70 x 50	8 - 70	0	0504 014	223.00
Parallelism tolerance < 0.016 mm, V-grooves and base grinded						
		100 x 40 x 30	6 - 40	1	0504 112	66.00
		150 x 50 x 40	8 - 50	1	0504 113	88.00
		200 x 70 x 50	8 - 70	1	0504 114	145.00
Parallelism tolerance < 0.064 mm, V-grooves and base milled						
		100 x 40 x 30	6 - 40	3	0504 312	45.50
		150 x 50 x 40	8 - 50	3	0504 313	67.00
		200 x 70 x 50	8 - 70	3	0504 314	110.00



0520 V-blocks (pair)



Model

- Special steel, hardened
- Parallelism from prism to base 0.004 mm
- 90° grooves
- Machined in pairs

Delivery

- In pairs
- Cardboard box

▢	▢	Base dimensions L x W x H mm	For shaft dia. mm	Order no.	List price EUR
		75 x 35 x 30	5 - 40	0520 101	133.00
		100 x 47 x 40	5 - 55	0520 102	175.00
		150 x 55 x 45	5 - 60	0520 103	232.00
		200 x 65 x 55	5 - 75	0520 104	324.00
		250 x 85 x 70	5 - 100	0520 105	443.00

0508 Pair of X type V-blocks (parallel)



Model

- Factory standard
- Special cast iron
- 4 x 90° grooves, different sizes
- Machined in pairs

Delivery

- In pairs
- Cardboard box

▢	▢	Base dimensions L x W x H mm	For shaft dia. mm	Accuracy grade	Order no.	List price EUR
Parallelism tolerance < 0.008 mm, V-grooves and base grinded						
		60 x 120 x 100	8 - 90	0	0508 011	307.00
		75 x 150 x 130	8 - 130	0	0508 012	370.00
	▪	90 x 200 x 170	12 - 180	0	0508 013	542.00
Parallelism tolerance < 0.016 mm, V-grooves and base finely grinded						
		60 x 120 x 100	8 - 90	1	0508 111	266.00
		75 x 150 x 130	8 - 130	1	0508 112	328.00
	▪	90 x 200 x 170	8 - 180	1	0508 113	500.00



0522 V-blocks with clamp



Specification

- Stainless special steel, hardened
- Parallelism from prism to base 0.004 mm
- 2 x 90° grooves

Delivery

- Cardboard box

Marked	Marked	Dimensions L x W x H mm	For shaft dia. mm	Order no.	List price EUR
		50 x 40 x 40	5 - 30	0522 201	133.00
		75 x 55 x 55	5 - 50	0522 202	162.00
		100 x 75 x 75	7 - 70	0522 203	233.00

0522 Double V-blocks (pairs) with clamp



Specification

- Stainless special steel, hardened
- Parallelism from prism to base 0.004 mm

Delivery

- 2 x 90° grooves
- Machined in pairs
- In pairs
- Cardboard box

Marked	Marked	Dimensions L x W x H mm	For shaft dia. mm	Order no.	List price EUR
Special steel, hardened					
		50 x 40 x 40	5 - 30	0522 101	204.00
		75 x 55 x 55	5 - 50	0522 102	249.00
		100 x 75 x 75	7 - 70	0522 103	359.00
Stainless special steel, hardened					
		50 x 40 x 40	5 - 30	0522 206	253.00
		75 x 55 x 55	5 - 50	0522 207	308.00
		100 x 75 x 75	7 - 70	0522 208	443.00



0524 Double V-blocks (pairs) with clamp lateral tilting



Specification

- Stainless special steel, hardened
- Flatness, parallelism and symmetry tolerance 0.004 mm
- Right-angled tolerance faces to prism 0.01
- 2 x 90° grooves
- Machined in pairs

Delivery

- In pairs
- Cardboard box

		Dimensions mm	For shaft dia. mm	Order no.	List price EUR
		60 x 58 x 40	5 - 30	0524 101	225.00
		75 x 70 x 54	5 - 30	0524 102	278.00
		100 x 96 x 75	7 - 70	0524 103	418.00

0522 Clamp for double V-blocks



Delivery

- In pairs
- Cardboard box

		Suitable for prisms	Order no.	List price EUR
		0522 201 / 0522 101 / 0522 206 / 0524 101	0522 111	20.50
		0522 202 / 0522 102 / 0522 207 / 0524 102	0522 112	27.10
		0522 203 / 0522 103 / 0522 208 / 0524 103	0522 113	34.60



0527 Magnetic measuring and clamping prism



Model

- Flatness, parallelism and symmetry tolerance 0.004 mm
- Right-angled tolerance is 0.01 mm
- Magnet can be switched ON/OFF
- Magnetic force 600 N

Delivery

- Cardboard box

		Dimensions L x W x H mm	For shaft dia. mm	Order no.	List price EUR
Special steel					
		80 x 67 x 99	6 - 66	0527 101	340.00
		100 x 67 x 96	6 - 70	0527 102	471.00
Special steel, hardened					
		71,5 x 45 x 70	2 - 40	0527 106	275.00
		80 x 67 x 99	6 - 66	0527 107	403.00
		100 x 67 x 96	6 - 70	0527 108	562.00

0527 Magnetic measuring and clamping prism (pairs)



Model

- Grinded in pairs

Delivery

- In pairs
- Cardboard box

		Dimensions L x W x H mm	For shaft dia. mm	Order no.	List price EUR
Special steel					
		80 x 67 x 99	6 - 66	0527 104	668.00
		100 x 67 x 96	6 - 70	0527 105	934.00
Special steel, hardened					
		71,5 x 45 x 70	2 - 40	0527 109	550.00
		80 x 67 x 99	6 - 66	0527 110	858.00
		100 x 67 x 96	6 - 70	0527 111	1111.00



0527 Magnetic measuring and clamping prism single / pair



0527 151



0527 156

Specification

- Special steel, polished
- Two sided machining
- Prisms 120°
- Parallelism from prism to base 0.008 mm
- Magnet can be switched ON/OFF
- Magnetic force 600 N

Delivery

- Cardboard box
- Packed individually or in pairs

	Dimensions L x W x H mm	For shaft dia. mm	Order no.	List price EUR
Single prism				
	70 x 45 x 65	13 - 35	0527 151	180.00
Pair of prisms				
	70 x 45 x 65	13 - 35	0527 156	355.00

0525 Adjustable V-blocks 0-60°



Model

- Special steel, hardened
- Locking device
- Vernier reading

Delivery

- Cardboard box

	Dimensions mm	For shaft dia. mm	Order no.	List price EUR
	75 x 25 x 33	4 - 28	0525 101	120.00
	102 x 30 x 46	4 - 40	0525 102	128.00
	102 x 46 x 46	4 - 40	0525 103	137.00



0536 Set of parallel blocks



0536 202




0536 211

Model

- Special steel, hardened

Delivery

- Wooden case

	Measuring range mm	Height mm	Width mm	Number of devices	Height tolerance µm	Order no.	List price EUR
Set consists of 9 pairs, length 100 mm							
	10 - 42	10 / 14 / 18 / 22 / 26 / 30 / 34 / 38 / 42	4	9	± 5	0536 220	103.00
Set consists of 9 pairs, length 150 mm							
	10 - 42	10 / 14 / 18 / 22 / 26 30 / 34 / 38 / 42	4	9	± 5	0536 230	141.00
Set consists of 12 pairs, length 120 mm							
	14 - 40	14 / 16 / 18 / 20 22 / 24 / 26 / 28 30 / 32 / 35 / 40	10	12	± 5	0536 201	391.00
Set consists of 14 pairs, length 150 mm							
	14 - 50	14 / 16 / 18 / 20 22 / 24 / 26 / 28 30 / 32 / 35 / 40 45 / 50	10	14	± 5	0536 202	438.00
Set consists of 20 pairs, length 100 mm							
	2 - 24	5 / 10 / 15 / 20 6 / 11 / 16 / 21 7 / 12 / 17 / 22 8 / 13 / 18 / 23 9 / 14 / 19 / 24	2 3 4 5 6	20	± 5	0536 211	546.00
Set consists of 24 pairs, length 125 mm							
	8 - 42	11 / 16 / 21 / 26 / 31 / 36 13 / 18 / 23 / 28 / 33 / 38 15 / 20 / 25 / 30 / 35 / 40 17 / 22 / 27 / 32 / 37 / 42	8 10 12 14	24	± 5	0536 212	645.00
Set consists of 24 pairs, length 150 mm							
	8 - 42	11 / 16 / 21 / 26 / 31 / 36 13 / 18 / 23 / 28 / 33 / 38 15 / 20 / 25 / 30 / 35 / 40 17 / 22 / 27 / 32 / 37 / 42	8 10 12 14	24	± 5	0536 213	650.00



0550 Machine levels




**DIN
877**

Model

- DIN 877
- V-groove in the base
- Longitudinal level grinded and graduated
- Transverse level
- Thermally insulated

Delivery

- Case

	Length mm	Order no.	List price EUR
Reading 0.02 mm/m			
	160	0550 021	266.00
	200	0550 022	292.00
	250	0550 023	318.00
	300	0550 024	344.00
Reading 0.1 mm/m			
	160	0550 101	188.00
	200	0550 102	214.00
	250	0550 103	240.00
	300	0550 104	266.00
Reading 0.3 mm/m			
	160	0550 131	146.00
	200	0550 132	172.00
	250	0550 133	198.00
	300	0550 134	224.00

0551 Crankpin levels




**DIN
877**

Model

- DIN 877
- With a longitudinal and a transverse level
- Longitudinal level grinded and graduated

Delivery

- Case

	Length mm	Order no.	List price EUR
Reading 0.04 mm/m			
	90	0551 002	281.00
	120	0551 003	336.00
Reading 0.1 mm/m			
	90	0551 012	178.00
	120	0551 013	200.00
Reading 0.2 mm/m			
	60	0551 021	168.00



0556 Frame levels



**DIN
877**

Model

- DIN 877
- V-grooves on 3 sides
- Longitudinal level
- Grinded and graduated
- Transverse level
- Thermally insulated

Delivery

- Case

	Dimensions mm	Order no.	List price EUR
Reading 0.02 mm/m			
	150 x 150	0556 022	511.00
	200 x 200	0556 023	584.00
	300 x 300	0556 024	823.00
Reading 0.1 mm/m			
	100 x 100	0556 101	313.00
	150 x 150	0556 102	365.00
	200 x 200	0556 103	458.00
	300 x 300	0556 104	729.00
Reading 0.3 mm/m			
	100 x 100	0556 131	261.00
	150 x 150	0556 132	313.00
	200 x 200	0556 133	479.00
	300 x 300	0556 134	573.00

0560 Protractor level



Model

- Made of special steel
- With degree scale
- Flat base
- 1° to 0-90°
- Ideal for levelling, determining centre points and adjusting angles

Delivery

- Case

	Dimensions mm	Readings minutes	Order no.	List price EUR
Reading 0.04 mm/m				
	200 x 200	6	0560 001	306.00

0563 Magnetic angle gauge



Model

- Centre punch
- Dial face 360°
- Magnetic 90° splayed base

Delivery

- Cardboard box

	Order no.	List price EUR
	0563 001	417.00



0580 Combined lathe and thread cutting gauge



Model

- Special steel
- Cuts for trapezoidal (Acme), Whitworth and metric threads

	Dimensions	Measuring range	Order no.	List price
	mm	in °		EUR
	90 x 40 x 2	40-80°	0580 101	7.40

0580 Combined lathe and thread cutting gauge



Model

- Special steel
- Cuts for trapezoidal (Acme), Whitworth and metric threads
- With clearance angle

	Dimensions	Measuring range	Order no.	List price
	mm	in °		EUR
	90 x 40 x 2	0-30° and 40-80°	0580 111	10.70

0580 Combined lathe and thread cutting gauge

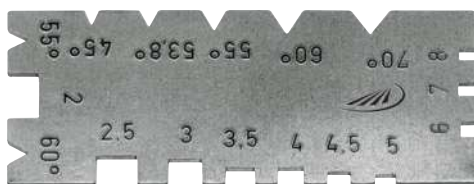


Model

- Special steel
- For square threads and trapezoidal threads, Whitworth and metric threads

	Dimensions	Order no.	List price
	mm		EUR
	90 x 40 x 2	0580 121	7.50

0580 Universal thread cutting gauge



Model

- Special steel
- For V-threads and square threads

	Dimensions	Order no.	List price
	mm		EUR
	60 x 25 x 2	0580 151	3.10



0595 ACME Thread gauge



Model

- Special steel
- Cuts for trapezoidal threads



		Dimensions mm	Type of thread	Order no.	List price EUR
		60 x 20 x 2	Trapezoidal threads	0595 130	3.10

0595 Thread cutting gauge



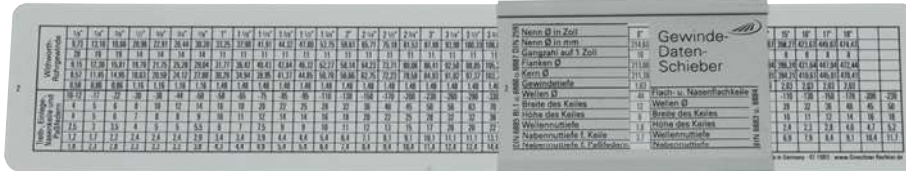
Model

- Special steel
- Cuts for Whitworth or metric threads

		Dimensions mm	Type of thread	Order no.	List price EUR
Metric ISO - threads 60°					
		74 x 24 x 2	Whitworth-thread	0595 142	2.70
Whithworth - threads 55°					
		74 x 24 x 2	Whitworth-thread	0595 140	2.70



0581 DIN thread conversion and fit slide rules



0581 101



0581 123

Model

- For reading the most important theoretical dimensions of thread tolerance

	Description	Order no.	List price EUR
Aluminium anodized			
	Fine thread slide rule	0581 101	21.60
	DIN thread slide rule	0581 103	14.60
	DIN fit slide rule	0581 105	20.00
Plastic			
	DIN thread slide rule	0581 123	10.50
	DIN fit slide rule	0581 125	9.20

0582 ISO thread converter - Filetor



Model

- For direct reading of all standard information for determining of threads
- Plastic housing

	Dimensions mm	Order no.	List price EUR
	60 x 30 x 110	0582 110	61.00

0582 ISO tolerance indicator - Tolerator



Model

- For direct reading of all standard information of all ISO-tolerance values
- Plastic housing

	Dimensions mm	Order no.	List price EUR
	60 x 30 x 110	0582 120	61.00



0582 mm/inch converter



Model

- Direct reading of inch to millimeter conversion
- Plastic housing

		Dimensions mm	Order no.	List price EUR
		60 x 30 x 110	0582 130	61.00

0589 Profile gauge

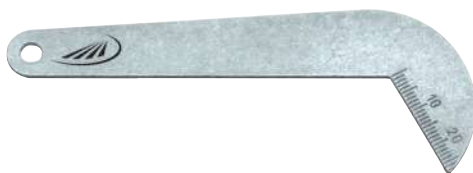


Model

- Spring pins
- Pin-dia. 1.0 mm

		Dimensions mm	Order no.	List price EUR
		154 x 85	0589 101	16.90
		350 x 150	0589 103	52.00

0590 Twist drill grinding gauge



Model

- Special steel
- For twist drills
- Acute angle of 118°

		Max dia. mm	Order no.	List price EUR
		50	0590 101	1.80

0590 Twist drill grinding and inspection gauge



Model

- Special steel
- Measure the length of the cutting edge and the cutting angle of 118°
- Locking screw

		Reading mm mm	Max. dia. mm	Order no.	List price EUR
		0.10	50	0590 111	65.00



0590 Universal grinding gauge



Model

- Special steel
- Scales in mm graduation
- Angles 120°, 118°, 90°, 60° and 55°

		Dimensions	Order no.	List price
		mm		EUR
		95 x 63 x 2	0590 151	3.40

0595 Welding gauge blank



Model

- Special steel
- Pure
- For easy testing of fillet weld thicknesses of rectangular parts

		For measuring range	Order no.	List price
		mm		EUR
		3 - 12	0595 110	13.20

0595 Welding gauge blank



Model

- Aluminium
- Pure, for fast reading of the weld dimensions

		For measuring range	Order no.	List price
		mm		EUR
		0 - 5	0595 115	3.80

0595 Welding gauge



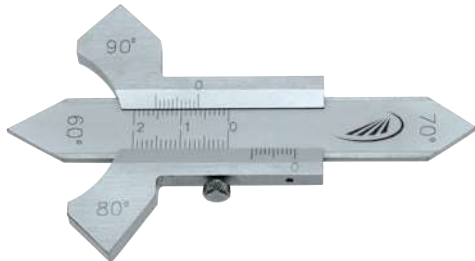
Model

- Stainless steel
- Reading accuracy 0.2 mm
- Easy to read the result due to the reference line in the reading window
- Quick and easy inspection of welding seam heights

		Dimensions	Order no.	List price
		mm		EUR
		108 x 81.5 x 3.2	0595 251	91.00



0595 Welding gauge

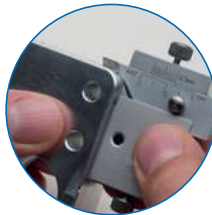


Model

- Special steel
- Locking screw
- Angle 60°, 70°, 80° and 90°; to measure the height of flat welds and fillet weld thicknesses

	Measuring range	Reading	Order no.	List price
	mm	mm		EUR
	20	0.10	0595 101	21.20

0597 Radius gauge



Model

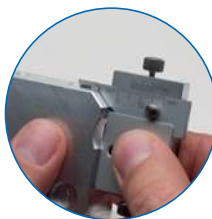
- To determine radius size work-pieces
- Stainless steel
- Reading parts are satin chrome finished

Delivery

- Wooden case

	Measuring range	Reading	Order no.	List price
	mm	mm		EUR
	0 - 10	0.10	0597 305	175.00

0597 Chamfer gauge



Model

- Stainless steel
- Reading parts are satin chrome finished
- For simultaneously testing of the chamfer angle and the dimensional accuracy
- Dimensions: 48 x 30 x 8.5 mm

Delivery

- 3 interchangeable blades: 30°, 45°, 60°

	Measuring range	Reading	Order no.	List price
	mm	mm		EUR
	0 - 10	0.10	0597 301	175.00

0598 Tapered hole gauges



Model

- Special steel
- Reading parts matted

☒	☒	Measuring range mm	Reading mm	Order no.	List price EUR
Special steel					
		0.5 - 11	0.10	0598 101	48.80
		0.5 - 7.0	0.10	0598 103	48.80
		2.0 - 7.0	0.10	0598 105	48.80
Plastic					
		0.5 - 11	0.10	0598 601	48.80

0599 Nozzle / small hole gauges

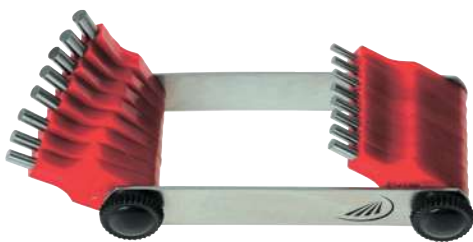


Model

- Special steel
- Cone 1:10
- Nickel plated housing

☒	☒	Measuring range mm	Reading mm	Order no.	List price EUR
		0 - 3	0.01	0599 101	48.80
		0 - 5	0.01	0599 102	59.00

0599 Nozzle gauges



Model

- With steel pins
- Plastic handle
- Manufacturing tolerance ± 0.01 mm

☒	☒	Measuring range mm	Increment mm	Number of pairs	Order no.	List price EUR
		0.45 - 1.5	0.05	20	0599 151	7.10
		1.5 - 3.0	0.1	16	0599 152	7.10



0600 Tapered hole gauges



0600 101



0600 111

Model

- Reading 0.1 mm

Measuring range mm	Order no.	List price EUR
Special steel, flat		
1 - 15	0600 101	25.80
15 - 30	0600 102	32.30
30 - 45	0600 103	34.60
Hardened stainless steel, satin chrome finished, round, knurled handle		
1 - 6	0600 111	55.00
4 - 15	0600 112	73.00
15 - 30	0600 113	152.00
30 - 45	0600 114	237.00
45 - 60	0600 115	380.00

0601 Drill and steel wire hole gauges (millimeter)



Model

- Special steel, nitrided

Measuring range mm	Increment mm	Order no.	List price EUR
0.1 - 10	0.1	0601 103	91.00
3.0 - 10	0.1	0601 120	69.00

0604 Radius gauges

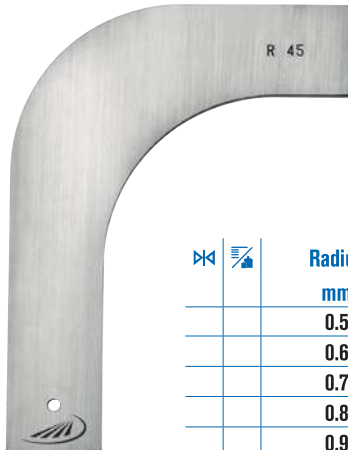


Model

- Concave and convex
- Locking nut
- Milled finish

Measuring range mm	Number of blades	Order no.	List price EUR
Special steel			
1.0 - 7.0	17	0604 002	6.80
7.5 - 15	16	0604 004	7.50
15.5 - 25	15	0604 006	7.50
Stainless steel			
1.0 - 7.0	17	0604 202	9.00
7.5 - 15	16	0604 204	11.10
15.5 - 25	15	0604 206	11.10

0604 Precision individual radius gauges



Model

- Special steel
- Factory standard
- Fine grinded
- For internal and external radii
- Custom sizes are available upon request

- Thickness:
R 0,5 - R 50 = 2 mm
R 50 - R 100 = 3 mm

✂	✂	Radius mm	Order no.	List price EUR
		0.5	0604 013	53.00
		0.6	0604 014	53.00
		0.7	0604 015	53.00
		0.8	0604 016	53.00
		0.9	0604 017	53.00
		1.0	0604 018	53.00
		1.5	0604 019	53.00
		2.0	0604 020	53.00
		2.5	0604 021	53.00
		3.0	0604 022	53.00
		3.5	0604 023	53.00
		4.0	0604 024	53.00
		4.5	0604 025	34.40
		5.0	0604 026	34.40
		5.5	0604 027	34.40
		6.0	0604 028	34.40
		6.5	0604 029	34.40
		7.0	0604 030	34.40
		7.5	0604 031	34.40
		8.0	0604 032	34.40
		8.5	0604 033	34.40
		9.0	0604 034	34.40
		9.5	0604 035	34.40
		10.0	0604 036	34.40
		10.5	0604 037	36.20
		11.0	0604 038	36.20
		11.5	0604 039	36.20
		12.0	0604 040	36.20
		12.5	0604 041	36.20
		13.0	0604 042	36.20
		13.5	0604 043	36.20
		14.0	0604 044	36.20
		14.5	0604 045	36.20
		15.0	0604 046	36.20
		15.5	0604 047	38.10
		16.0	0604 048	38.10
		16.5	0604 049	38.10
		17.0	0604 050	38.10
		17.5	0604 051	38.10
		18.0	0604 052	38.10
		18.5	0604 053	38.10
		19.0	0604 054	38.10

✂	✂	Radius mm	Order no.	List price EUR
		19.5	0604 055	38.10
		20.0	0604 056	38.10
		21.0	0604 057	39.70
		22.0	0604 058	39.70
		23.0	0604 059	39.70
		24.0	0604 060	39.70
		25.0	0604 061	39.70
		26.0	0604 062	39.70
		27.0	0604 063	39.70
		28.0	0604 064	39.70
		29.0	0604 065	39.70
		30.0	0604 066	39.70
		31.0	0604 067	43.30
		32.0	0604 068	43.30
		33.0	0604 069	43.30
		34.0	0604 070	43.30
		35.0	0604 071	43.30
		36.0	0604 072	43.30
		37.0	0604 073	43.30
		38.0	0604 074	43.30
		39.0	0604 075	43.30
		40.0	0604 076	43.30
		41.0	0604 077	52.00
		42.0	0604 078	52.00
		43.0	0604 079	52.00
		44.0	0604 080	52.00
		45.0	0604 081	52.00
		46.0	0604 082	52.00
		47.0	0604 083	52.00
		48.0	0604 084	52.00
		49.0	0604 085	52.00
		50.0	0604 086	52.00
		55.0	0604 087	56.00
		60.0	0604 088	59.00
		65.0	0604 089	63.00
		70.0	0604 090	72.00
		75.0	0604 091	72.00
		80.0	0604 092	72.00
		85.0	0604 093	72.00
		90.0	0604 094	72.00
		95.0	0604 095	72.00
		100.0	0604 096	72.00



0605 Screw pitch gauges



	Measuring range mm	Number of blades	Description	Order no.	List price EUR
	0.25 - 6.0	24	Metric threads according to ISO	0605 101	2.50
	0.40 - 7.0	20	Combined metric threads according to SI System	0605 102	2.30
	4.00 - 62.0	28	Whitworth threads according to DIN	0605 103	2.30
	8.00 - 28.0	6	Whitworth pipe threads	0605 104	2.30
	0.40 - 7.0 / 4.0 - 62.0	48	Combined metric SI and Whitworth threads	0605 105	3.40
	0.25 - 6.0 / 4.0 - 62.0	52	Combined metric and Whitworth	0605 106	3.60
	0.25 - 6.0 / 4.0 - 62.0 / 8.0 - 28.0	58	Metric Whitworth and pipe threads	0605 107	5.10
	4.00 - 42.0	30	US - threads	0605 108	3.00
	10.0 - 40.0	14	US - threads SAE	0605 109	3.20
	4.00 - 64.0	22	UNC - threads	0605 110	3.00
	12.0 - 80.0	16	UNF - threads	0605 111	3.00
	4.00 - 26.0	20	BSF - threads	0605 112	3.40

0606 / 0607 Feeler gauges



0606 121



0607 201



0607 401

Model

- Conical blades
- Width 10mm
- Blade length 100
- Locking nut

	Measuring range mm	Number of blades	Order no.	List price EUR
Spring band steel				
	0.03 - 0.1	8	0606 121	1.60
	0.05 - 0.5	8	0606 123	1.60
	0.05 - 1.0	13	0606 127	1.60
	0.05 - 1.0	20	0606 130	2.50
	0.1 - 2.0	20	0606 131	6.10
	0.1 - 0.5	21	0606 132	3.00
	0.05 - 2.0	21	0606 133	5.60
	0.03 - 1.0	32	0606 136	5.10
Stainless spring band steel				
	0.05 - 0.5	8	0607 201	3.90
	0.05 - 1.0	13	0607 202	6.10
	0.05 - 1.0	20	0607 203	8.80
Brass (anti-magnetic)				
	0.05 - 0.5	8	0607 401	6.60
	0.05 - 1.0	13	0607 402	8.10
	0.05 - 1.0	20	0607 403	11.60

0606 Feeler gauges, long version



Model

- Cylindrical blades
- Width 13 mm

		Measuring range	Length	Number of	Order no.	List price
		mm	mm	blades		EUR
		0.05 - 0.5	150	8	0606 150	3.40
		0.05 - 0.5	200	8	0606 152	4.10
		0.05 - 0.5	300	8	0606 154	5.90
		0.05 - 1.0	200	13	0606 160	8.90
		0.05 - 1.0	300	13	0606 162	10.20
		0.05 - 1.0	200	20	0606 170	10.70
		0.05 - 1.0	300	20	0606 172	13.50
		0.1 - 2.0	200	20	0606 176	17.90
		0.1 - 2.0	300	20	0606 178	26.20

0608 Feeler gauge, accuracy grade T3



Model

- Conical blades
- Width 10 mm

		Measuring range	Number of	Order no.	List price
		mm	blades		EUR
		0.1 - 0.4	6	0608 140	1.90
		0.05 - 1.0	13	0608 143	4.60
		0.05 - 1.0	20	0608 144	7.20
		0.03 - 1.0	32	0608 149	16.60



0612 Feeler gauge tapes in single boxes - INOX



Model

- Stainless steel
- Width 12.7 mm
- Length 5 m
- Tape from 0.08 mm upwards marked with dimension

Delivery

- Plastic box

✕	☞	Nominal size mm	Order no.	List price EUR
		0.01	0612 501	41.20
		0.02	0612 502	34.40
		0.03	0612 503	12.00
		0.04	0612 504	12.00
		0.05	0612 505	8.90
		0.06	0612 506	9.30
		0.07	0612 507	9.30
		0.08	0612 508	9.30
		0.09	0612 509	9.30
		0.10	0612 510	8.00
		0.12	0612 512	8.00
		0.15	0612 515	8.00
		0.18	0612 518	10.30
		0.20	0612 520	8.00
		0.25	0612 525	8.00

0612 Set of feeler gauge tapes in wallholder - INOX



Model

- Refillable with selected feeler gauges
- Wall holder made of steel, gloss coated
- With size labels

Delivery

- With holder and mounting fittings

✕	☞	Dimensions mm	Measuring range mm	Number of boxes	Order no.	List price EUR
		330 x 100 x 110	0.01 - 0.25	15	0612 180	203.00

0611 Accessories for feeler gauge tapes



0611 195



0611 197



0611 198

✕	☞	Description	Dimensions mm	Order no.	List price EUR
		Holder for feeler gauge tape	125 x 17	0611 195	2.70
		Wallholder for 0.01 - 0.25 mm	330 x 100 x 110	0611 197	39.00
		Wallholder for 0.3 - 1.0 mm	330 x 210 x 220	0611 198	59.00





HELIOS • PREISSER

0611 Feeler gauge tapes in single boxes



Model

- Hardened carbon steel
- Width 12.7 mm
- Length 5 m
- Tape from 0.08 mm upwards marked with dimension

Delivery

- Plastic box

		Nominal size	Order no.	List price
		mm		EUR
		0.005	0611 300	79.00
		0.01	0611 501	31.30
		0.02	0611 502	25.90
		0.03	0611 503	9.00
		0.04	0611 504	9.00
		0.05	0611 505	6.80
		0.06	0611 506	7.10
		0.07	0611 507	7.10
		0.08	0611 508	7.10
		0.09	0611 509	7.10
		0.10	0611 510	6.00
		0.12	0611 512	6.00
		0.15	0611 515	6.00
		0.18	0611 518	7.90
		0.20	0611 520	6.00
		0.25	0611 525	6.00
		0.30	0611 530	7.00
		0.35	0611 535	7.00
		0.40	0611 540	8.00
		0.45	0611 545	8.00
		0.50	0611 550	8.00
		0.55	0611 552	10.30
		0.60	0611 554	10.30
		0.65	0611 556	10.30
		0.70	0611 558	10.30
		0.75	0611 560	10.30
		0.80	0611 562	10.30
		0.85	0611 564	10.50
		0.90	0611 566	11.00
		0.95	0611 568	11.00
		1.0	0611 570	11.00

0611 Set of feeler gauge tapes in wallholder



Model

- Refillable with selected feeler gauges
- Wall holder made of steel, gloss coated
- With size labels

Delivery

- With holder and mounting fittings

		Dimensions	Measuring range	Number of	Order no.	List price
		mm	mm	boxes		EUR
		330 x 100 x 110	0.01 - 0.25	15	0611 180	155.00
		330 x 210 x 220	0.3 - 1.0	15	0611 190	176.00



0613 Precision reference sheets



0613 607



0613 709



0613 812



0613 912

Nominal size mm	Brass, 150 x 500 mm, 5 pieces		Carbon steel, 50 x 300 mm, 10 pieces		Stainless steel, 100 x 500 mm, 5 pieces		Stainless steel, 150 x 500 mm, 5 pieces	
	Order no.	List price EUR	Order no.	List price EUR	Order no.	List price EUR	Order no.	List price EUR
0.01			0613 607	68.00				
0.02			0613 609	36.70	0613 709	51.00		
0.025	0613 912	56.00					0613 812	56.00
0.03			0613 614	25.80				
0.04			0613 616	25.80				
0.05	0613 918	45.00	0613 618	25.80	0613 718	30.60	0613 818	45.50
0.06			0613 620	17.60				
0.07			0613 622	17.60				
0.075	0613 924	45.00					0613 824	45.50
0.08			0613 626	17.60				
0.09			0613 628	17.60				
0.10	0613 930	42.70	0613 630	18.20	0613 730	28.70	0613 830	43.10
0.12			0613 632	18.20				
0.15	0613 934	42.70	0613 634	18.20	0613 734	28.70	0613 834	43.10
0.18			0613 636	18.20				
0.20	0613 938	53.00	0613 638	18.20	0613 738	36.20	0613 838	54.00
0.25	0613 940	53.00	0613 640	18.20			0613 840	54.00
0.30	0613 942	53.00	0613 642	18.20	0613 742	36.20	0613 842	54.00
0.35			0613 644	20.20				
0.40	0613 946	63.00	0613 646	20.20	0613 746	40.80	0613 846	63.00
0.45			0613 648	20.20				
0.50	0613 950	72.00	0613 650	20.20	0613 750	46.70	0613 850	73.00
0.60			0613 652	32.30	0613 752	56.00		
0.70			0613 654	32.30	0613 754	56.00		
0.80			0613 656	32.30	0613 756	68.00		
0.90			0613 658	32.30	0613 758	68.00		
1.00			0613 660	32.30	0613 760	75.00	0613 860	118.00



0613 Feeler gauge tapes



Nominal size mm	Brass, width 150 mm length 5 m		Carbon steel, width 25 mm length 5 m		Carbon steel, width 50 mm length 5 m		Stainless steel, width 100 mm length 5 m		Stainless steel, width 150 mm length 5 m	
	Order no.	List price EUR	Order no.	List price EUR	Order no.	List price EUR	Order no.	List price EUR	Order no.	List price EUR
0.01			0613 107	68.00	0613 207	98.00				
0.02			0613 109	36.70	0613 209	53.00	0613 309	94.00		
0.025	0613 512	106.00							0613 412	107.00
0.03			0613 114	25.80	0613 214	37.10				
0.04			0613 116	25.80	0613 216	37.10				
0.05	0613 518	85.00	0613 118	25.80	0613 218	37.10	0613 318	56.00	0613 418	86.00
0.06			0613 120	17.60	0613 220	25.30				
0.07			0613 122	17.60	0613 222	25.30				
0.075	0613 524	85.00							0613 424	86.00
0.08			0613 126	17.60	0613 226	25.30				
0.09			0613 128	17.60	0613 228	25.30				
0.10	0613 530	81.00	0613 130	18.20	0613 230	26.30	0613 330	53.00	0613 430	82.00
0.12					0613 232	26.30				
0.15	0613 534	81.00	0613 134	18.20	0613 234	26.30	0613 334	53.00	0613 434	82.00
0.18					0613 236	26.30				
0.20	0613 538	101.00	0613 138	18.20	0613 238	26.30	0613 338	68.00	0613 438	103.00
0.25	0613 540	101.00			0613 240	26.30			0613 440	103.00
0.30	0613 542	101.00	0613 142	18.20	0613 242	26.30	0613 342	68.00	0613 442	103.00
0.35					0613 244	28.70				
0.40	0613 546	113.00	0613 146	20.20	0613 246	28.70	0613 346	77.00	0613 446	114.00
0.45					0613 248	28.70				
0.50	0613 550	132.00	0613 150	20.20	0613 250	28.70	0613 350	88.00	0613 450	133.00
0.60			0613 152	32.30	0613 252	46.70	0613 352	105.00		
0.70			0613 154	32.30	0613 254	46.70	0613 354	105.00		
0.80			0613 156	32.30	0613 256	46.70	0613 356	126.00		
0.90			0613 158	32.30	0613 258	46.70	0613 358	126.00		
1.00			0613 160	32.30	0613 260	46.70	0613 360	144.00		



0609 8 piece gauge set



Model

- Universal grinding gauge – thickness 2 mm, scales in mm graduation, angles 120°, 118°, 90°, 60° and 55°, special steel
- Welding gauge – measuring range 20 mm, reading 0.1 mm, locking screw, special steel
- Radius gauge – 17 blades, concave and convex, locking nut, stainless steel, measuring range 1.0 – 7.0 mm
- Radius gauge – 16 blades, concave and convex, locking nut, stainless steel, measuring range 7.5 – 15.0 mm
- Radius gauge – 15 blades, concave and convex, locking nut, stainless steel, measuring range 15.5 – 25.0 mm
- Screw pitch gauge – 24 blades, for metric threads according to ISO, range 0.25 – 6.0 mm
- Screw pitch gauge – 28 blades, for Whitworth threads according to DIN, range 4.0 – 62.0 mm
- Feeler gauge - 20 conical blades, length 100 mm, range 0.05 - 1.00, stainless steel, locking nut

Delivery

- Wooden box set

		Order no.	List price
		0609 190	EUR 82.00

0584 Comparative surface roughness standards



Model

- 6 manufacturing processes
- 30 comparative standards

Delivery

- Plastic case

		Order no.	List price
		0584 101	EUR 317.00



0623 Individual steel gauge blocks, tolerance class 0



Model

- EN ISO 3650
- Special steel, hardened

Nominal size mm	Order no.	List price EUR
0.5	0623 100	42.20
1.0	0623 102	35.70
1.001	0623 104	35.70
1.002	0623 106	35.70
1.003	0623 108	35.70
1.004	0623 110	35.70
1.005	0623 112	35.70
1.006	0623 114	35.70
1.007	0623 116	35.70
1.008	0623 118	35.70
1.009	0623 120	35.70
1.01	0623 122	35.70
1.02	0623 130	35.70
1.03	0623 135	35.70
1.04	0623 140	35.70
1.05	0623 145	35.70
1.06	0623 150	35.70
1.07	0623 155	35.70
1.08	0623 160	35.70
1.09	0623 165	35.70
1.10	0623 170	35.70
1.11	0623 175	35.70
1.12	0623 180	35.70
1.13	0623 185	35.70
1.14	0623 190	35.70
1.15	0623 195	35.70
1.16	0623 200	35.70
1.17	0623 205	35.70
1.18	0623 210	35.70
1.19	0623 215	35.70
1.20	0623 220	35.70
1.21	0623 225	35.70
1.22	0623 230	35.70
1.23	0623 235	35.70
1.24	0623 240	35.70
1.25	0623 245	35.70
1.26	0623 250	35.70
1.27	0623 255	35.70
1.28	0623 260	35.70
1.29	0623 265	35.70

Nominal size mm	Order no.	List price EUR
1.30	0623 270	35.70
1.31	0623 275	35.70
1.32	0623 280	35.70
1.33	0623 285	35.70
1.34	0623 290	35.70
1.35	0623 295	35.70
1.36	0623 300	35.70
1.37	0623 305	35.70
1.38	0623 310	35.70
1.39	0623 315	35.70
1.40	0623 320	35.70
1.41	0623 325	35.70
1.42	0623 330	35.70
1.43	0623 335	35.70
1.44	0623 340	35.70
1.45	0623 345	35.70
1.46	0623 350	35.70
1.47	0623 355	35.70
1.48	0623 360	35.70
1.49	0623 365	35.70
1.50	0623 370	35.70
1.60	0623 375	35.70
1.70	0623 380	35.70
1.80	0623 385	35.70
1.90	0623 390	35.70
2.00	0623 395	35.70
2.50	0623 400	37.90
3.00	0623 405	37.90
3.50	0623 410	37.90
4.00	0623 415	37.90
4.50	0623 420	37.90
5.00	0623 425	37.90
5.50	0623 430	37.90
6.00	0623 435	37.90
6.50	0623 440	37.90
7.00	0623 445	37.90
7.50	0623 450	37.90
8.00	0623 455	37.90
8.50	0623 460	37.90
9.00	0623 465	37.90

Nominal size mm	Order no.	List price EUR
9.50	0623 470	37.90
10.00	0623 475	45.40
11.00	0623 500	45.40
12.00	0623 510	45.40
13.00	0623 520	45.40
14.00	0623 530	45.40
15.00	0623 540	45.40
16.00	0623 550	45.40
17.00	0623 560	45.40
18.00	0623 570	45.40
19.00	0623 580	45.40
20.00	0623 590	45.40
21.00	0623 600	45.40
22.00	0623 610	45.40
23.00	0623 620	45.40
24.00	0623 630	45.40
25.00	0623 640	45.40
30.00	0623 650	54.00
35.00	0623 660	54.00
40.00	0623 670	54.00
50.00	0623 680	54.00
60.00	0623 690	54.00
70.00	0623 700	54.00
80.00	0623 710	67.00
90.00	0623 720	67.00
100.00	0623 730	80.00
125.00	0623 740	283.00
150.00	0623 750	283.00
175.00	0623 760	283.00
200.00	0623 770	338.00
300.00	0623 780	482.00
400.00	0623 790	626.00
500.00	0623 800	866.00
600.00	0623 810	1353.00
700.00	0623 820	1403.00
800.00	0623 830	1732.00
900.00	0623 840	2053.00
1000.00	0623 850	2545.00



0624 Individual steel gauge blocks, tolerance class 1



Model

- EN ISO 3650
- Special steel, hardened

Nominal size mm	Order no.	List price EUR
0.5	0624 100	28.10
1.0	0624 102	23.90
1.001	0624 104	23.90
1.002	0624 106	23.90
1.003	0624 108	23.90
1.004	0624 110	23.90
1.005	0624 112	23.90
1.006	0624 114	23.90
1.007	0624 116	23.90
1.008	0624 118	23.90
1.009	0624 120	23.90
1.01	0624 122	23.90
1.02	0624 130	23.90
1.03	0624 135	23.90
1.04	0624 140	23.90
1.05	0624 145	23.90
1.06	0624 150	23.90
1.07	0624 155	23.90
1.08	0624 160	23.90
1.09	0624 165	23.90
1.10	0624 170	23.90
1.11	0624 175	23.90
1.12	0624 180	23.90
1.13	0624 185	23.90
1.14	0624 190	23.90
1.15	0624 195	23.90
1.16	0624 200	23.90
1.17	0624 205	23.90
1.18	0624 210	23.90
1.19	0624 215	23.90
1.20	0624 220	23.90
1.21	0624 225	23.90
1.22	0624 230	23.90
1.23	0624 235	23.90
1.24	0624 240	23.90
1.25	0624 245	23.90
1.26	0624 250	23.90
1.27	0624 255	23.90
1.28	0624 260	23.90
1.29	0624 265	23.90

Nominal size mm	Order no.	List price EUR
1.30	0624 270	23.90
1.31	0624 275	23.90
1.32	0624 280	23.90
1.33	0624 285	23.90
1.34	0624 290	23.90
1.35	0624 295	23.90
1.36	0624 300	23.90
1.37	0624 305	23.90
1.38	0624 310	23.90
1.39	0624 315	23.90
1.40	0624 320	23.90
1.41	0624 325	23.90
1.42	0624 330	23.90
1.43	0624 335	23.90
1.44	0624 340	23.90
1.45	0624 345	23.90
1.46	0624 350	23.90
1.47	0624 355	23.90
1.48	0624 360	23.90
1.49	0624 365	23.90
1.50	0624 370	23.90
1.60	0624 375	23.90
1.70	0624 380	23.90
1.80	0624 385	23.90
1.90	0624 390	23.90
2.00	0624 395	23.90
2.50	0624 400	24.90
3.00	0624 405	24.90
3.50	0624 410	24.90
4.00	0624 415	24.90
4.50	0624 420	24.90
5.00	0624 425	24.90
5.50	0624 430	24.90
6.00	0624 435	24.90
6.50	0624 440	24.90
7.00	0624 445	24.90
7.50	0624 450	24.90
8.00	0624 455	24.90
8.50	0624 460	24.90
9.00	0624 465	24.90

Nominal size mm	Order no.	List price EUR
9.50	0624 470	24.90
10.00	0624 475	30.30
11.00	0624 500	30.30
12.00	0624 510	30.30
13.00	0624 520	30.30
14.00	0624 530	30.30
15.00	0624 540	30.30
16.00	0624 550	30.30
17.00	0624 560	30.30
18.00	0624 570	30.30
19.00	0624 580	30.30
20.00	0624 590	30.30
21.00	0624 600	30.30
22.00	0624 610	30.30
23.00	0624 620	30.30
24.00	0624 630	30.30
25.00	0624 640	30.30
30.00	0624 650	35.70
35.00	0624 660	35.70
40.00	0624 670	35.70
50.00	0624 680	35.70
60.00	0624 690	35.70
70.00	0624 700	35.70
80.00	0624 710	44.40
90.00	0624 720	44.40
100.00	0624 730	53.00
125.00	0624 740	172.00
150.00	0624 750	172.00
175.00	0624 760	172.00
200.00	0624 770	204.00
300.00	0624 780	293.00
400.00	0624 790	379.00
500.00	0624 800	525.00
600.00	0624 810	730.00
700.00	0624 820	758.00
800.00	0624 830	937.00
900.00	0624 840	1110.00
1000.00	0624 850	1375.00



0625 Individual steel gauge blocks, tolerance class 2



Model

- EN ISO 3650
- Special steel, hardened

Nominal size mm	Order no.	List price EUR
0.5	0625 100	22.70
1.0	0625 102	19.50
1.001	0625 104	19.50
1.002	0625 106	19.50
1.003	0625 108	19.50
1.004	0625 110	19.50
1.005	0625 112	19.50
1.006	0625 114	19.50
1.007	0625 116	19.50
1.008	0625 118	19.50
1.009	0625 120	19.50
1.01	0625 122	19.50
1.02	0625 130	19.50
1.03	0625 135	19.50
1.04	0625 140	19.50
1.05	0625 145	19.50
1.06	0625 150	19.50
1.07	0625 155	19.50
1.08	0625 160	19.50
1.09	0625 165	19.50
1.10	0625 170	19.50
1.11	0625 175	19.50
1.12	0625 180	19.50
1.13	0625 185	19.50
1.14	0625 190	19.50
1.15	0625 195	19.50
1.16	0625 200	19.50
1.17	0625 205	19.50
1.18	0625 210	19.50
1.19	0625 215	19.50
1.20	0625 220	19.50
1.21	0625 225	19.50
1.22	0625 230	19.50
1.23	0625 235	19.50
1.24	0625 240	19.50
1.25	0625 245	19.50
1.26	0625 250	19.50
1.27	0625 255	19.50
1.28	0625 260	19.50
1.29	0625 265	19.50

Nominal size mm	Order no.	List price EUR
1.30	0625 270	19.50
1.31	0625 275	19.50
1.32	0625 280	19.50
1.33	0625 285	19.50
1.34	0625 290	19.50
1.35	0625 295	19.50
1.36	0625 300	19.50
1.37	0625 305	19.50
1.38	0625 310	19.50
1.39	0625 315	19.50
1.40	0625 320	19.50
1.41	0625 325	19.50
1.42	0625 330	19.50
1.43	0625 335	19.50
1.44	0625 340	19.50
1.45	0625 345	19.50
1.46	0625 350	19.50
1.47	0625 355	19.50
1.48	0625 360	19.50
1.49	0625 365	19.50
1.50	0625 370	19.50
1.60	0625 375	19.50
1.70	0625 380	19.50
1.80	0625 385	19.50
1.90	0625 390	19.50
2.00	0625 395	19.50
2.50	0625 400	19.50
3.00	0625 405	19.50
3.50	0625 410	19.50
4.00	0625 415	19.50
4.50	0625 420	19.50
5.00	0625 425	19.50
5.50	0625 430	19.50
6.00	0625 435	19.50
6.50	0625 440	19.50
7.00	0625 445	19.50
7.50	0625 450	19.50
8.00	0625 455	19.50
8.50	0625 460	19.50
9.00	0625 465	19.50

Nominal size mm	Order no.	List price EUR
9.50	0625 470	19.50
10.00	0625 475	23.90
11.00	0625 500	23.90
12.00	0625 510	23.90
13.00	0625 520	23.90
14.00	0625 530	23.90
15.00	0625 540	23.90
16.00	0625 550	23.90
17.00	0625 560	23.90
18.00	0625 570	23.90
19.00	0625 580	23.90
20.00	0625 590	23.90
21.00	0625 600	23.90
22.00	0625 610	23.90
23.00	0625 620	23.90
24.00	0625 630	23.90
25.00	0625 640	23.90
30.00	0625 650	28.10
35.00	0625 660	28.10
40.00	0625 670	28.10
50.00	0625 680	28.10
60.00	0625 690	28.10
70.00	0625 700	28.10
80.00	0625 710	35.70
90.00	0625 720	35.70
100.00	0625 730	42.20
125.00	0625 740	138.00
150.00	0625 750	138.00
175.00	0625 760	138.00
200.00	0625 770	147.00
300.00	0625 780	232.00
400.00	0625 790	273.00
500.00	0625 800	357.00
600.00	0625 810	444.00
700.00	0625 820	530.00
800.00	0625 830	656.00
900.00	0625 840	777.00
1000.00	0625 850	963.00



0633 Gauge block accessories sets



Delivery

- Wooden case



No. of parts	Gauge block holder (mm)						Radiused measuring jaw pairs (mm)						Scriber	Centre point	Plane parallel jaws (pair)	Knife edge jaws (pair)	Holder base	Order no.	List Price EUR
	0-50	0-100	100-200	0-300	200-400	300-500	4	10	16	20	30	40							
4				●		●						●		●				0633 130	1151.00
10	●	●	●				●	●					●	●			●	0633 131	1337.00
14	●	●	●				●	●	●	●			●	●			●	0633 132	1730.00
23	●	●	●	●	●		●	●	●	●	●	●	●	●	●	●	●	0633 133	3417.00

0633 Radiused measuring jaws with cylindrical shoulders / pair



		Nominal size	Measuring depth	Order no.	List price EUR
		mm	mm		
		4	8	0633 150	214.00
		10	15	0633 151	214.00
		16	20	0633 152	229.00
		20	40	0633 153	281.00
		30	65	0633 154	396.00
		40	95	0633 155	516.00

0633 Inspection points, pair



Model

- Special steel, hardened

		Dimensions	Order no.	List price EUR
		mm		
		55 x 9 x 9	0633 170	255.00




0633 Scribers



Model

- Special steel, hardened or carbide

	Dimensions mm	Order no.	List price EUR
Carbide			
	55 x 9 x 8	0633 172	375.00
Special steel			
	55 x 9 x 8	0633 171	93.00

0633 Centre point



Model

- Special steel, hardened


	Dimensions mm	Order no.	List price EUR
	55 x 9 x 12	0633 173	120.00

0633 Plane / parallel jaws, pair



Model

- For external measurement

	Dimensions mm	Order no.	List price EUR
For external measurements			
	100 x 9 x 20	0633 174	208.00
	125 x 9 x 20	0633 175	245.00
For internal and external measurements			
	100 x 9 x 20	0633 176	386.00
	125 x 9 x 20	0633 177	458.00

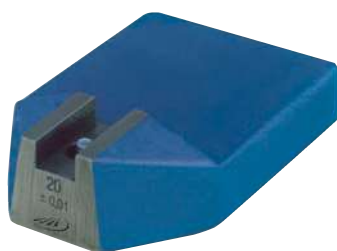


0633 Gauge block holders with rapid adjustment



		Measuring range mm	Order no.	List price EUR
		0 - 50	0633 136	182.00
		0 - 100	0633 137	208.00
		0 - 200	0633 138	250.00
		100 - 200	0633 139	229.00
		100 - 300	0633 140	271.00
		200 - 400	0633 141	313.00
		300 - 500	0633 142	354.00
		400 - 600	0633 143	386.00
		500 - 800	0633 144	448.00
		800 - 1000	0633 145	625.00

0633 Stand for gauge block holder



Model

- Special steel, hardened

		Dimensions mm	Order no.	List price EUR
		103 x 70 x 27	0633 182	162.00

0633 Gauge block maintenance set



Model

- Set consists of:
- Linen cloth
 - Chamois leather
 - 1 jar of anti corrosion oil
 - Oil stone
 - Fine paint brush
 - Broad paint brush
 - User manual

Delivery

- Wooden case

		Order no.	List price EUR
		0633 001	314.00

0633 Steel gauge block inspection sets for micrometers




Model

- EN ISO 3650
- Special steel, hardened
- Tolerance class 1

Delivery

- Wooden case

	Max. nominal size mm	Order no.	List price EUR
10 pieces, excludes the optical flat	2.5 / 5.1 / 7.7 / 10.3 / 12.9 / 15.0 / 17.6 / 20.2 / 22.8 / 25.0	0633 810	275.00
5 pieces with optical flat	5.1 / 10.3 / 15.0 / 20.2 / 25.0	0633 805	339.00
8 pieces with optical flat	5.1 / 10.3 / 15.0 / 20.2 / 25.0 / 50.0 / 75.0 / 100	0633 808	453.00

0633 Steel gauge block inspection set for calipers




Model

- EN ISO 3650
- Special steel, hardened
- Tolerance class 1
- Supplied with setting rings 4 mm and 25 mm

Delivery

- Wooden case

	For measuring range mm	Max. nominal size mm	Order no.	List price EUR
3 pieces	200	30.0 / 41.3 / 131.4	0633 833	563.00
4 pieces	300	30.0 / 41.3 / 131.4 / 243.5	0633 834	751.00
6 pieces	500	30.0 / 41.3 / 131.4 / 243.5 / 281.2 / 481.1	0633 836	1341.00
5 pieces	1000	131.4 / 243.5 / 281.2 / 481.1 / 900	0633 838	2371.00



0633 Parallel steel gauge block sets





Model

- EN ISO 3650
- Special steel, hardened

Delivery

- Wooden case

		Number of gauge blocks	Max. nominal size mm	Increment mm	Order no.	List price EUR
Tolerance class 0						
		103	1.005 1.01 - 1.49 0.5 - 24.5 25.0 - 100.0	- 0.01 0.5 25	0633 014	889.00
		87	1.001 - 1.009 1.01 - 1.49 0.5 - 9.5 10.0 - 100.0	0.001 0.01 0.5 10	0633 016	812.00
		47	1.005 1.01 - 1.09 1.11 - 1.19 1.1 - 1.9 1.0 - 9.0 10.0 - 100.0	- 0.01 0.01 0.1 1 10	0633 018	528.00
		32	1.005 1.01 - 1.09 1.1 - 1.9 1.0 - 9.0 10.0 - 30.0 50.0	- 0.01 0.1 1 10 -	0633 020	386.00
Tolerance class 1						
		103	1.005 1.01 - 1.49 0.5 - 24.5 25.0 - 100.0	- 0.01 0.5 25	0633 114	684.00
		87	1.001 - 1.009 1.01 - 1.49 0.5 - 9.5 10.0 - 100.0	0.001 0.01 0.5 10	0633 116	521.00
		47	1.005 1.01 - 1.09 1.11 - 1.19 1.1 - 1.9 1.0 - 9.0 10.0 - 100.0	- 0.01 0.01 0.1 1 10	0633 118	322.00
		32	1.005 1.01 - 1.09 1.1 - 1.9 1.0 - 9.0 10.0 - 30.0 50.0	- 0.01 0.1 1 10 -	0633 120	234.00



0633 Parallel steel gauge block sets





Model

- EN ISO 3650
- Special steel, hardened

Delivery

- Wooden case

		Number of gauge blocks	Max. nominal size mm	Increment mm	Order no.	List price EUR
Tolerance class 2						
		103	1.005 1.01 - 1.49 0.5 - 24.5 25.0 - 100.0	- 0.01 0.5 25	0633 214	432.00
		87	1.001 - 1.009 1.01 - 1.49 0.5 - 9.5 10.0 - 100.0	0.001 0.01 0.5 10	0633 216	341.00
		47	1.005 1.01 - 1.09 1.11 - 1.19 1.1 - 1.9 1.0 - 9.0 10.0 - 100.0	- 0.01 0.01 0.1 1 10	0633 218	233.00
		32	1.005 1.01 - 1.09 1.1 - 1.9 1.0 - 9.0 10.0 - 30.0 50.0	- 0.01 0.1 1 10 -	0633 220	154.00



0634 Carbide gauge block sets





Model

- EN ISO 3650
- Carbide

Delivery

- Wooden case

		Number of gauge blocks	Max. nominal size mm	Increment mm	Order no.	List price EUR
Tolerance class 0						
		103	1.005 1.01 - 1.49 0.5 - 24.5 25.0 - 100.0	- 0.01 0.5 25	0634 014	4573.00
		87	1.001 - 1.009 1.01 - 1.49 0.5 - 9.5 10.0 - 100.0	0.001 0.01 0.5 10	0634 016	3768.00
		47	1.005 1.01 - 1.09 1.11 - 1.19 1.1 - 1.9 1.0 - 9.0 10.0 - 100.0	- 0.01 0.01 0.1 1 10	0634 017	2462.00
		32	1.005 1.01 - 1.09 1.1 - 1.9 1.0 - 9.0 10.0 - 30.0 50.0	- 0.01 0.1 1 10 -	0634 020	1293.00
Tolerance class 1						
		103	1.005 1.01 - 1.49 0.5 - 24.5 25.0 - 100.0	- 0.01 0.5 25	0634 114	4025.00
		87	1.001 - 1.009 1.01 - 1.49 0.5 - 9.5 10.0 - 100.0	0.001 0.01 0.5 10	0634 116	3291.00
		47	1.005 1.01 - 1.09 1.11 - 1.19 1.1 - 1.9 1.0 - 9.0 10.0 - 100.0	- 0.01 0.01 0.1 1 10	0634 117	2206.00
		32	1.005 1.01 - 1.09 1.1 - 1.9 1.0 - 9.0 10.0 - 30.0 50.0	- 0.01 0.1 1 10 -	0634 120	1122.00



0634 Ceramic gauge block sets



Model

- EN ISO 3650
- Ceramic

Delivery

- Wooden case

		Number of gauge blocks	Max. nominal size mm	Increment mm	Order no.	List price EUR
Tolerance class 0						
		103	1.005 1.01 - 1.49 0.5 - 24.5 25.0 - 100.0	- 0.01 0.5 25	0634 514	6385.00
		87	1.001 - 1.009 1.01 - 1.49 0.5 - 9.5 10.0 - 100.0	0.001 0.01 0.5 10	0634 516	5085.00
		47	1.005 1.01 - 1.09 1.11 - 1.19 1.1 - 1.9 1.0 - 9.0 10.0 - 100.0	- 0.01 0.01 0.1 1 10	0634 517	3032.00
		32	1.005 1.01 - 1.09 1.1 - 1.9 1.0 - 9.0 10.0 - 30.0 50.0	- 0.01 0.1 1 10 -	0634 520	1841.00
Tolerance class 1						
		103	1.005 1.01 - 1.49 0.5 - 24.5 25.0 - 100.0	- 0.01 0.5 25	0634 614	5345.00
		87	1.001 - 1.009 1.01 - 1.49 0.5 - 9.5 10.0 - 100.0	0.001 0.01 0.5 10	0634 616	4248.00
		47	1.005 1.01 - 1.09 1.11 - 1.19 1.1 - 1.9 1.0 - 9.0 10.0 - 100.0	- 0.01 0.01 0.1 1 10	0634 617	2534.00
		32	1.005 1.01 - 1.09 1.1 - 1.9 1.0 - 9.0 10.0 - 30.0 50.0	- 0.01 0.1 1 10 -	0634 620	1536.00



0636 Set of pin gauges




Model

- DIN 2269
- Made out of high quality gauge steel

Delivery

- Wooden case

DIN
2269

	Length mm	Number of pins	Max. nominal size mm	Increment mm	Order no.	List price EUR
Special steel, hardened and aged - Tolerance class 1						
	40	51	0.5 - 1.0	0.01	0636 301	812.00
	70	21	1.0 - 2.0	0.05	0636 321	246.00
	70	21	2.0 - 3.0	0.05	0636 322	246.00
	70	21	3.0 - 4.0	0.05	0636 323	304.00
	70	21	4.0 - 5.0	0.05	0636 324	304.00
	70	21	5.0 - 6.0	0.05	0636 325	304.00
	70	21	6.0 - 7.0	0.05	0636 326	371.00
	70	21	7.0 - 8.0	0.05	0636 327	371.00
	70	21	8.0 - 9.0	0.05	0636 328	371.00
	70	21	9.0 - 10.0	0.05	0636 329	371.00
	70	101	1.0 - 2.0	0.01	0636 341	1034.00
	70	100	2.01 - 3.0	0.01	0636 342	1034.00
	70	100	3.01 - 4.0	0.01	0636 343	1310.00
	70	100	4.01 - 5.0	0.01	0636 344	1310.00
	70	100	5.01 - 6.0	0.01	0636 345	1310.00
	70	100	6.01 - 7.0	0.01	0636 346	1612.00
	70	100	7.01 - 8.0	0.01	0636 347	1612.00
	70	100	8.01 - 9.0	0.01	0636 348	1612.00
	70	100	9.01 - 10.0	0.01	0636 349	1612.00
	70	91	1.0 - 10.0	0.1	0636 351	1321.00
	70	81	1.0 - 5.0	0.05	0636 352	1200.00
Special steel, hardened and aged - Tolerance class 2						
	70	101	1.0 - 2.0	0.01	0636 372	723.00
	70	100	2.01 - 3.0	0.01	0636 373	723.00
	70	100	3.01 - 4.0	0.01	0636 374	952.00
	70	100	4.01 - 5.0	0.01	0636 375	952.00
	70	100	5.01 - 6.0	0.01	0636 376	952.00
	70	100	6.01 - 7.0	0.01	0636 377	1153.00
	70	100	7.01 - 8.0	0.01	0636 378	1308.00
	70	100	8.01 - 9.0	0.01	0636 379	1308.00
	70	100	9.01 - 10.0	0.01	0636 380	1308.00



0636 Pin gauge holder



Model

- Die cast
- With locking screw

		Measuring range mm	Length mm	Order no.	List price EUR
		1 - 2	60	0636 392	13.20
		2 - 4	68	0636 393	15.10
		4 - 6	76	0636 394	28.70
		6 - 8	84	0636 395	36.80
		8 - 10	92	0636 396	42.40

0643 Snap gauge, double jaw



Model

- Dimensions 3 to 100 mm
- Gauge steel
- Hardened measuring faces
- Dimensions acc. DIN 2230
- Manufacturing tolerances: according to DIN 7163

Delivery

- Available on request
- Important: Please mention dimension and fit

0649 Adjustable snap gauges



Model

- Special cast iron
- 1 fixed measuring face, 2 adjustable square measuring faces

Delivery

- Cardboard box

		Max. nominal size mm	Order no.	List price EUR
		0 - 6	0649 201	72.00
		6 - 13	0649 202	72.00
		13 - 19	0649 203	72.00
		19 - 26	0649 204	74.00
		26 - 32	0649 205	74.00
		32 - 38	0649 206	78.00
		38 - 44	0649 207	78.00
		44 - 51	0649 208	81.00
		51 - 57	0649 209	81.00
		57 - 64	0649 210	85.00

		Max. nominal size mm	Order no.	List price EUR
		64 - 70	0649 211	85.00
		70 - 78	0649 212	93.00
		78 - 87	0649 213	93.00
		87 - 97	0649 215	103.00
		97 - 106	0649 216	118.00
		106 - 116	0649 217	118.00
		116 - 125	0649 219	141.00
		125 - 135	0649 220	183.00
		135 - 144	0649 222	210.00
		144 - 156	0649 223	210.00



0650 Adjustable snap gauges



0650 103



0650 114

Model

- Adjustable
- Light alloy cast frame
- Carbide tipped measuring faces
- Without indicator
- Up to 100 mm with centering support and lift-off device. Snap gauges above 100 mm excludes centering support and lift-off device

Delivery

- Without digital indicator
- Cardboard box

	Measuring range mm	Measuring surface mm	Order no.	List price EUR
	100 - 150	40 x 18	0650 105	1731.00
	150 - 200	40 x 18	0650 106	1959.00
	200 - 250	40 x 18	0650 107	2247.00
	250 - 300	40 x 18	0650 108	2339.00
	300 - 350	40 x 18	0650 109	2482.00
	350 - 400	40 x 18	0650 110	2686.00
	400 - 450	40 x 18	0650 111	2883.00
	450 - 500	40 x 18	0650 112	3081.00
	500 - 550	40 x 18	0650 113	3280.00
	550 - 600	40 x 18	0650 114	3545.00

0656 Ring gauges

Model

- DIN 2250-1 (C)
- Hardened gauge steel
- For setting internal measuring instruments

DIN
2250-1



⏏	📏	Nominal size	Order no.	List price	⏏	📏	Nominal size	Order no.	List price
		mm		EUR			mm		EUR
		3.0	0656 309	57.00			58	0656 355	108.00
		3.5	0656 310	50.00			60	0656 356	113.00
		4.0	0656 311	50.00			62	0656 357	116.00
		4.5	0656 312	50.00			65	0656 358	123.00
		5.0	0656 313	49.20			68	0656 359	132.00
		6.0	0656 314	47.90			70	0656 360	137.00
		7.0	0656 315	47.90			72	0656 361	142.00
		8.0	0656 316	47.90			75	0656 362	146.00
		9.0	0656 317	47.90			78	0656 363	154.00
		10.0	0656 318	47.90			80	0656 364	159.00
		11.0	0656 319	49.20			82	0656 365	168.00
		12.0	0656 320	50.00			85	0656 366	179.00
		12.5	0656 303	50.00			88	0656 367	191.00
		13.0	0656 321	51.00			90	0656 368	197.00
		14.0	0656 322	51.00			92	0656 369	205.00
		15.0	0656 323	52.00			95	0656 370	219.00
		16.0	0656 324	52.00			98	0656 371	229.00
		17.0	0656 325	53.00			100	0656 372	237.00
		17.5	0656 304	75.00			105	0656 373	248.00
		18.0	0656 326	53.00			110	0656 374	261.00
		19.0	0656 327	54.00			115	0656 375	272.00
		20	0656 328	56.00			120	0656 376	284.00
		21	0656 329	56.00			125	0656 377	297.00
		22	0656 330	56.00			130	0656 378	307.00
		23	0656 331	59.00			135	0656 379	320.00
		24	0656 332	60.00			140	0656 380	331.00
		25	0656 333	61.00			145	0656 381	343.00
		26	0656 334	63.00			150	0656 382	355.00
		27	0656 335	63.00			155	0656 383	388.00
		28	0656 336	64.00			160	0656 384	419.00
		30	0656 337	59.00			165	0656 385	450.00
		32	0656 338	67.00			170	0656 386	483.00
		33	0656 339	67.00			175	0656 387	516.00
		34	0656 340	68.00			180	0656 388	547.00
		35	0656 341	68.00			185	0656 389	580.00
		36	0656 342	69.00			190	0656 390	611.00
		37	0656 343	71.00			195	0656 391	644.00
		38	0656 344	72.00			200	0656 392	675.00
		40	0656 345	73.00			210	0656 393	712.00
		42	0656 346	77.00			220	0656 394	743.00
		44	0656 347	81.00			225	0656 305	893.00
		45	0656 348	83.00			230	0656 395	778.00
		46	0656 349	85.00			240	0656 396	813.00
		47	0656 350	88.00			250	0656 397	848.00
		48	0656 351	90.00			260	0656 398	883.00
		50	0656 352	93.00			270	0656 399	916.00
		52	0656 353	95.00			275	0656 306	983.00
		55	0656 354	104.00					



0637 Plug gauges



Model

- Manufacturing tolerances: according to DIN 7150-2 and DIN 7164
- Fit H7
- All cylindrical
- Special dimensions with other tolerances are available upon request

		Dimensions	Nominal size	Order no.	List price
		acc. to Din	mm		EUR
Gauge steel, hardened					
		2245-1	2	0637 103	31.10
		2245-1	2.2	0637 104	31.10
		2245-1	2.5	0637 105	31.10
		2245-1	2.8	0637 106	22.60
		2245-1	3	0637 107	22.60
		2245-1	3.5	0637 108	20.20
		2245-1	4	0637 109	20.20
		2245-1	4.5	0637 110	20.20
		2245-1	5	0637 111	19.10
		2245-1	6	0637 112	19.10
		2245-1	7	0637 113	20.20
		2245-1	8	0637 114	20.20
		2245-1	9	0637 115	21.60
		2245-1	10	0637 116	22.60
		2245-1	11	0637 117	22.60
		2245-1	12	0637 118	24.00
		2245-1	13	0637 119	25.10
		2245-1	14	0637 120	25.10
		2245-1	15	0637 121	25.80
		2245-1	16	0637 122	25.80
		2245-1	17	0637 123	27.00
		2245-1	18	0637 124	28.00
		2245-1	19	0637 125	28.00
		2245-1	20	0637 126	28.00
		2245-1	21	0637 127	29.50
		2245-1	22	0637 128	30.10
		2245-1	23	0637 129	31.10
		2245-1	24	0637 130	31.10
		2245-1	25	0637 131	32.30
		2245-1	26	0637 132	33.60
		2245-1	27	0637 133	33.60
		2245-1	28	0637 134	34.60
		2245-1	30	0637 135	34.60
		2245-1	32	0637 136	38.30

		Dimensions	Nominal size	Order no.	List price
		acc. to Din	mm		EUR
		2245-1	33	0637 137	39.00
		2245-1	34	0637 138	40.10
		2245-1	35	0637 139	40.10
		2245-1	36	0637 140	41.10
		2245-1	37	0637 141	41.90
		2245-1	38	0637 142	43.10
		2245-1	40	0637 144	44.40
		2245-2	42	0637 146	45.70
		2245-2	43	0637 147	56.00
		2245-2	44	0637 148	49.20
		2245-2	45	0637 149	50.00
		2245-2	46	0637 150	51.00
		2245-2	47	0637 151	53.00
		2245-2	48	0637 152	54.00
		2245-2	50	0637 154	56.00
		2245-2	52	0637 155	59.00
		2245-2	55	0637 156	63.00
		2245-2	58	0637 157	67.00
		2245-2	60	0637 158	69.00
		2245-2	62	0637 159	73.00
		2245-2	65	0637 160	73.00
		2245-2	68	0637 161	80.00
		2245-2	70	0637 162	81.00
		2245-2	72	0637 163	83.00
		2245-2	75	0637 164	88.00
		2245-2	78	0637 165	92.00
		2245-2	80	0637 166	93.00
		2245-2	82	0637 167	95.00
		2245-2	85	0637 168	99.00
		2245-2	88	0637 169	104.00
		2245-2	90	0637 170	105.00
		2245-2	92	0637 171	108.00
		2245-2	95	0637 172	110.00
		2245-2	98	0637 173	114.00
		2245-2	100	0637 174	116.00





0637 Plug gauge set



Model

- DIN 2245
- Hardened gauge steel
- GO and NOGO

Delivery

- Wooden box

DIN
2245

⌘	☒	Number of gauges	ISO fit	Nominal size mm	Order no.	List price EUR
		(3, 4, 5, 6, 8, 10, 12)				
		7	H7	3 - 12	0637 190	148.00

**PLUG GAUGES
WITH SPECIAL DIMENSIONS**

**FAST
DELIVERY**

More information

and the price list on request

or directly online at

www.helios-preisser.de/en/downloads

Downloads



Custom-made
according to **ISO Fits**

or according to your
Nominal size & tolerance

DIN 2245-Z / Gauge steel / All cylindrical





0658 Thread plug gauges



**DIN
2280**

Model

- DIN 2280
- For standard metric ISO threads DIN 13
- Gauge steel, hardened

Marked	Marked	ISO Fit	Type of thread	Nominal size mm	Thread pitch mm	Order no.	List price EUR
		6H	M	3.0	0.50	0658 009	68.00
		6H	M	4.0	0.70	0658 011	64.00
		6H	M	5.0	0.80	0658 012	63.00
		6H	M	6.0	1.00	0658 013	60.00
		6H	M	8.0	1.25	0658 015	63.00
		6H	M	10.0	1.50	0658 017	67.00
		6H	M	12.0	1.75	0658 019	72.00

0658 Set of thread plug gauges



Delivery

- Wooden box

**DIN
2280**

Marked	Marked	Tolerance class	Type of thread	Max. nominal size mm	Order no.	List price EUR
		(M3, M4, M5, M6, M8, M10, M12)				
		6H	M	M3 - M12	0658 090	252.00

0658 GO thread ring gauges



Model

- DIN 2285-1
- GO thread ring gauge
- For standard metric ISO threads DIN 13
- Hardened gauge steel

**DIN
2285-1**

Marked	Marked	ISO Fit	Type of thread	Nominal size mm	Thread pitch mm	Order no.	List price EUR
		6g	M	3.0	0.50	0658 509	53.00
		6g	M	4.0	0.70	0658 511	49.20
		6g	M	5.0	0.80	0658 512	49.20
		6g	M	6.0	1.00	0658 513	49.20
		6g	M	8.0	1.25	0658 515	50.00
		6g	M	10.0	1.50	0658 517	59.00
		6g	M	12.0	1.75	0658 519	69.00



0658 NO GO thread ring gauges



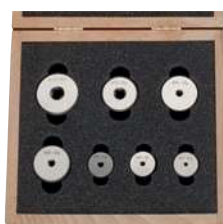
Model

- DIN 2299-1
- NOGO thread ring gauge
- For standard metric ISO threads DIN 13
- Hardened gauge steel

DIN
2299-1

ISO Fit	Type of thread	Nominal size mm	Thread pitch mm	Order no.	List price EUR
6g	M	3.0	0.50	0658 609	53.00
6g	M	4.0	0.70	0658 611	49.20
6g	M	5.0	0.8	0658 612	49.20
6g	M	6.0	1.0	0658 613	49.20
6g	M	8.0	1.25	0658 615	50.00
6g	M	10.0	1.5	0658 617	59.00
6g	M	12.0	1.75	0658 619	69.00

0658 Thread ring gauges GO



Model

- 7-pieces
- Hardened gauge steel
- For standard metric ISO threads DIN 13
- Fit 6g

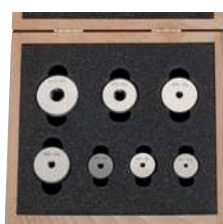
Delivery

- Wooden case

DIN
2285-1

ISO Fit	Type of thread	Nominal size mm	Order no.	List price EUR
(M3, M4, M5, M6, M8, M10, M12)				
6g	M	3 - 12	0658 590	252.00

0658 Thread ring gauges NO GO



Model

- 7-pieces
- Hardened gauge steel
- For standard metric ISO threads DIN 13
- Fit 6g

Delivery

- Wooden case

DIN
2299-1

ISO Fit	Type of thread	Nominal size mm	Order no.	List price EUR
(M3, M4, M5, M6, M8, M10, M12)				
6g	M	3 - 12	0658 690	252.00