



Roller conveyor

Features

Through the **smooth-running KERN roller conveyor attachments**, KERN YRO, you can convert your platform scale into a **robust measuring system** for rapid and flexible weight determination in conveyor applications

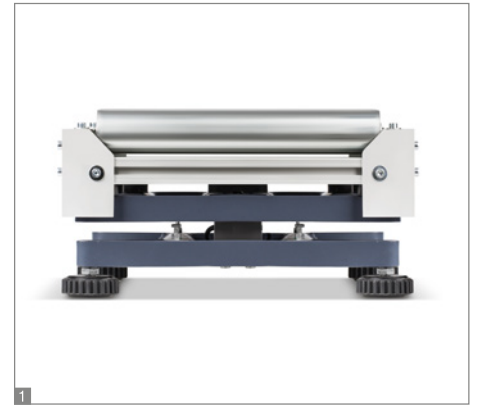
Especially **suitable for use in production and dispatch lines** where time means money. The goods or packages can either be weighed as they pass over the balance or, at fixed stations, heavy goods can easily be pushed onto the scale thanks to the roller conveyor and moved onto the connected roller conveyor

- **1** Simply connect the roller conveyor attachment to a platform (e.g. KERN IFB, IFG, IFS, IXS, KFP, KXP, SXS) – done!

Technical data

- **Robust aluminium profile frame.** The modular design means that you can **easily disassemble it for cleaning** or to replace individual components
- **Smooth-running, hot-dip galvanised steel rollers with ball bearings**
- **Conductive rollers** (suitable for use in hazardous areas)
- Suitable for use in **dry environments**

- Roller distance approx. 30 mm
- Direction of movement is lengthways
- Total dimensions: W×D×H
YRO-01: 405×305×130 mm, suitable for platforms with weighing plate sizes W×D 400×300 mm
YRO-02: 505×405×130 mm, suitable for platforms with weighing plate sizes W×D 500×400 mm
YRO-03: 655×505×130 mm, suitable for platforms with weighing plate sizes W×D 650×500 mm
- Total net weight approx. YRO-01: 6 kg, YRO-02: 8 kg, YRO-03: 12 kg
- Scope of delivery: 1 roller conveyor attachment (without scale)



STANDARD



KERN Pictograms

 Internal adjusting: Quick setting up of the balance's accuracy with internal adjusting weight (motordriven)	 GLP/ISO log: The balance displays serial number, user ID, weight, date and time, regardless of a printer connection	 Suspended weighing: Load support with hook on the underside of the balance
 Adjusting program CAL: For quick setting up of the balance's accuracy. External adjusting weight required	 GLP/ISO log: With weight, date and time. Only with KERN printers	 Battery operation: Ready for battery operation. The battery type is specified for each device
 Memory: Balance memory capacity, e.g. for article data, weighing data, tare weights, PLU etc.	 Piece counting: Reference quantities selectable. Display can be switched from piece to weight	 Rechargeable battery pack: Rechargeable set
 Alibi memory: Secure, electronic archiving of weighing results, complying with the 2014/31/EU standard.	 Recipe level A: The weights of the recipe ingredients can be added together and the total weight of the recipe can be printed out	 Universal mains adapter: with universal input and optional input socket adapters for A) EU, GB B) EU, GB, CH, USA C) EU, GB, CH, USA, AUS
 Data interface RS-232: To connect the balance to a printer, PC or network	 Recipe level B: Internal memory for complete recipes with name and target value of the recipe ingredients. User guidance through display	 Mains adapter: 230V/50Hz in standard version for EU. On request GB, USA or AUS version available
 RS-485 data interface: To connect the balance to a printer, PC or other peripherals. Suitable for data transfer over large distances. Network in bus topology is possible	 Recipe level C: Internal memory for complete recipes with name and target value of the recipe ingredients. User guidance through display, multiplier function, adjustment of recipe when dosages are exceeded or barcode recognition	 Power supply: Integrated in balance. 230V/50Hz standard EU. More standards e.g. GB, USA or AUS on request
 USB data interface: To connect the balance to a printer, PC or other peripherals	 Totalising level A: The weights of similar items can be added together and the total can be printed out	 Weighing principle: Strain gauges Electrical resistor on an elastic deforming body
 Bluetooth* data interface: To transfer data from the balance to a printer, PC or other peripherals	 Percentage determination: Determining the deviation in % from the target value (100 %)	 Weighing principle: Tuning fork A resonating body is electromagnetically excited, causing it to oscillate
 WLAN data interface: To transfer data from the balance to a printer, PC or other peripherals	 Weighing units: Can be switched to e.g. nonmetric units at the touch of a key. See balance model. Please refer to KERN's website for more details	 Weighing principle: Electromagnetic force compensation Coil inside a permanent magnet. For the most accurate weighings
 Control outputs (optocoupler, digital I/O): To connect relays, signal lamps, valves, etc.	 Weighing with tolerance range: (Check-weighing) Upper and lower limiting can be programmed individually, e.g. for sorting and dosing. The process is supported by an audible or visual signal, see the relevant model	 Weighing principle: Single cell technology Advanced version of the force compensation principle with the highest level of precision
 Interface for second balance: For direct connection of a second balance	 Hold function: (Animal weighing program) When the weighing conditions are unstable, a stable weight is calculated as an average value	 Verification possible: The time required for verification is specified in the pictogram
 Network interface: For connecting the scale to an Ethernet network	 Protection against dust and water splashes IPxx: The type of protection is shown in the pictogram.	 DAkkS calibration possible (DKD): The time required for DAkkS calibration is shown in days in the pictogram
 Wireless data transfer: between the weighing unit and the evaluation unit using an integrated radio module	 Stainless steel: The balance is protected against corrosion	 Package shipment: The time required for internal shipping preparations is shown in days in the pictogram
 KERN Communication Protocol (KCP): It is a standardized interface command set for KERN balances and other instruments, which allows retrieving and controlling all relevant parameters and functions of the device. KERN devices featuring KCP are thus easily integrated with computers, industrial controllers and other digital systems		 Pallet shipment: The time required for internal shipping preparations is shown in days in the pictogram

KERN – Precision is our business

To ensure the high precision of your balance KERN offers you the the appropriate test weight in the international OIML error limit classes E1-M3 from 1 mg - 2500 kg. In combination with a DAkkS calibration certificate the best pre-requisite for proper balance calibration.

The KERN DAkkS calibration laboratory today is one of the most modern and best-equipped DAkkS calibration laboratories for balances, test weights and force-measurement in Europe.

Thanks to the high level of automation, we can carry out DAkkS calibration of balances, test weights and force-measuring devices 24 hours a day, 7 days a week.

Range of services:

- DAkkS calibration of balances with a maximum load of up to 50 t
- DAkkS calibration of weights in the range of 1 mg – 2500 kg
- Volume determination and measuring of magnetic susceptibility (magnetic characteristics) for test weights
- Database supported management of checking equipment and reminder service
- Calibration of force-measuring devices
- DAkkS calibration certificates in the following languages DE, GB, FR, IT, ES, NL, PL
- Conformity evaluation and reverification of balances and test weights

Your KERN specialist dealer:

*The Bluetooth® word mark and logos are registered trademarks owned by Bluetooth SIG, Inc. and any use of such marks by KERN & SOHN GmbH is under license. Other trademarks and trade names are those of their respective owners.