

## Electromagnetic Slip Ring Tooth Clutch

Clutch with driver plate to be attached to the free wheeling gear part.

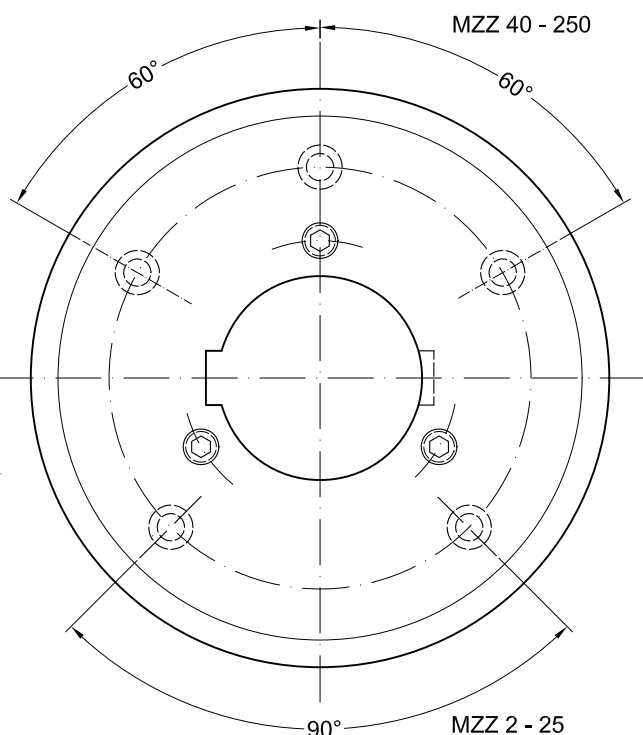
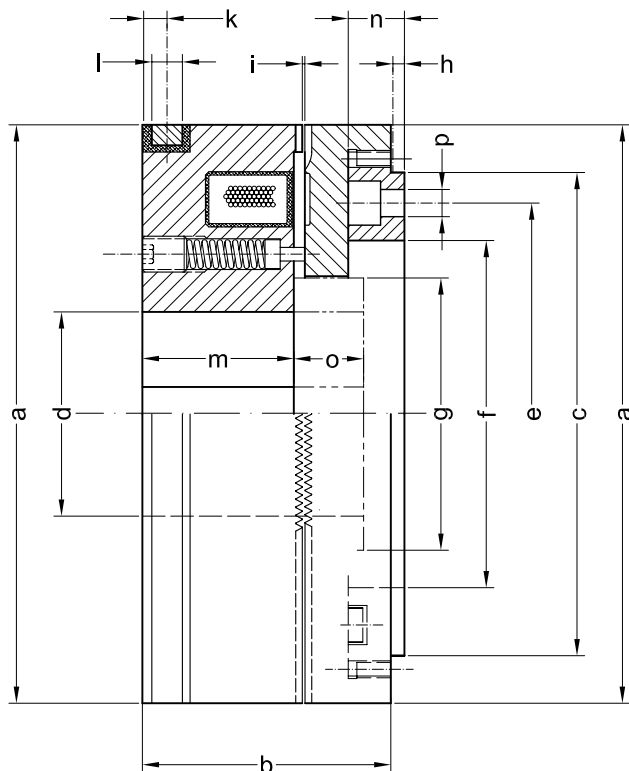
For oil and dry operation, coil voltage 24 V DC

- ◆ With one slip ring (+) and ground connection (-).
- ◆ With point shaped backlash-free tooth profile.
- ◆ With face toothed armature plate guided on splined driver plate.
- ◆ Version with tooth angle 55° for disengagement under torque load..
- ◆ For horizontal mounting.

Tooth mesh is effected after switching in the clutch coil at standstill.

When the clutch coil is switched off, the armature plate equipped with the face teeth and the guide spline is retained in it's disengaged position by permanent magnets what permit a complete disconnection of the drive system.

With slip ring made of hardened steel.



Data and Dimensions		MZZ 2	MZZ 5	MZZ 10	MZZ 16	MZZ 25	MZZ 40	MZZ 63	MZZ 100	MZZ 160	MZZ 250	MZZ 400
Static torque	Nm	20	50	100	160	250	400	630	1000	1600	2500	4000
continuous (static) torque load	Nm	12	31	63	100	160	250	400	630	1000	1600	2500
static torque fluctuating (dynamic) torque load	Nm	12	31	63	100	160	250	400	630	1000	1600	2500
Speed maximum	min <sup>-1</sup>	5500	4500	4000	3500	3300	3000	2500	2200	2000	1700	1500
Coil power consumption at 20 °C	W	20	25	30	35	45	45	50	60	80	110	140
Inertia moment side A	10 <sup>-3</sup> kgm <sup>2</sup>	0,27	0,65	1,4	2,3	3,5	6,8	13	28	56	112	214
Inertia moment side B	10 <sup>-3</sup> kgm <sup>2</sup>	0,43	1,2	2,4	3,7	6,2	11,5	20,5	42,5	83	188	340
Mass (weight)	kg	0,9	1,6	2,4	3,1	4,2	6,1	8,8	13,7	19,6	33,5	47
Ø a	mm	75	90	105	115	125	140	160	185	215	250	280
b	mm	33	40	45	50	58	67	75	85	100	115	130
Ø c f7	mm	65	75	85	100	105	115	130	155	180	210	235
Ø d H7	mm	30	40	45	50	55	60	70	80	95	110	125
Ø e	mm	55	64	75	85	90	100	115	135	155	180	205
Ø f H7	mm	45	53	65	70	75	85	95	115	130	150	175
Ø g maximum	mm	39	49	57	62	68	74	85	97	113	130	148
h length of centering	mm	1,5	2	2	2	2,5	2,5	3	3	4	4	4
i addendum distance	mm	0,2	0,2	0,25	0,3	0,3	0,4	0,4	0,5	0,6	0,7	0,8
k	mm	6	6	6,5	6,5	6,5	7,5	7,5	8	8	8	8
l	mm	8	8	8	8	8	10	10	10	10	10	10
m	mm	19	24,5	27	30	32	40	42	49	58	66	75
n	mm	8	9	10,5	12,5	15,5	17	19,5	21	26	29	32
o minimum length <sup>1)</sup>	mm	8,5	9	10,5	11,5	12	15	18	21	22	27	30
p	mm	4 x M4	4 x M5	4 x M5	4 x M6	4 x M6	6 x M6	6 x M8	6 x M8	6 x M10	6 x M12	8 x M12
Number of teeth - tooth angle 55°	-	155	160	187	164	178	200	224	190	208	188	212
Keyway DIN 6885 - 2	-	1	1	1	1	2	2	2	2	2	2	2

1) Bush of non-magnetizable material not included in consignment.